



Powys Replacement Local Development Plan (2022 - 2037)

**Powys Sustainable Settlements and Rural
Communities**

Small Settlement Assessment Background Paper

November 2023



Contents:

1. INTRODUCTION	4
Purpose	4
Aim	4
Methodology.....	5
2. CONTEXT	6
Background to Settlements within Powys	6
Policy Context.....	7
3. METHODOLOGY.....	9
Scoring System	10
Principle 1: Sustainable Transport and Accessibility	10
Principle 2: Availability of Facilities and Services.....	13
Principle 3: Employment Opportunities	15
Principle 4: Broadband Provision.....	16
Weighting.....	17
Population Size.....	18
4. SUSTAINABLE SETTLEMENTS ASSESSMENT	19
Initial Ranking of Settlements based on the Four Principles	19
Principle 1 - Sustainable Transport and Accessibility.....	20
Principle 2 – Availability of Facilities and Services	21
Principle 3 – Employment Opportunities.....	22
Principle 4 – Broadband Provision	23
5. RANKING OF SETTLEMENTS	24
Initial Ranking of Settlements based on their Weighted Scores against the Four Principles	24
Initial Ranking of Settlements based on Population Size	28
Initial Ranking of Small Settlements based on Combined Population Size and Weighted Score against the Four Principles	32
6. KEY FINDINGS AND RECOMMENDATIONS	36
APPENDIX 1- PRINCIPLE 1 – SUSTAINABLE TRANSPORT AND ACCESSIBILITY.....	38
APPENDIX 2- PRINCIPLE 2 – AVAILABILITY OF FACILITIES AND SERVICES.....	43
APPENDIX 3- PRINCIPLE 3 – EMPLOYMENT OPPORTUNITIES	48
APPENDIX 4- PRINCIPLE 4 – BROADBAND PROVISION.....	53
APPENDIX 5- PROPOSED SETTLEMENT TIERS COMPARED TO SETTLEMENT’S PREVIOUS DEVELOPMENT PLAN POSITIONS IN SETTLEMENT HIERARCHY.	57

Tables:

TABLE 1. DISTRIBUTION OF POPULATION ACROSS THE ADOPTED LDP SETTLEMENT HIERARCHY.....	6
TABLE 2. SCORING SYSTEM FOR THE PRESENCE OF CYCLE PATHS OR PAVEMENTS, CONNECTING THE SMALL SETTLEMENT TO A HIGHER ORDER SETTLEMENT.	10
TABLE 3. SCORING SYSTEM FOR THE PROPOSED ACTIVE TRAVEL ROUTES, CONNECTING THE SMALL SETTLEMENT TO A HIGHER ORDER SETTLEMENT.....	10
TABLE 4. SCORING SYSTEM FOR THE PRESENCE OF A BUS SERVICE (AT LEAST DAILY), CONNECTING THE SMALL SETTLEMENT TO A HIGHER ORDER SETTLEMENT.	11
TABLE 5. SCORING SYSTEM FOR TRAIN SERVICES.....	11
TABLE 6. SCORING SYSTEM FOR PROXIMITY TO A STRATEGIC HIGHWAY NETWORK	11
TABLE 7. SCORING SYSTEM FOR PRESENCE OF EV CHARGING FACILITIES (FOR PUBLIC USE) WITHIN THE SMALL SETTLEMENT.....	12
TABLE 8. SCORING SYSTEM FOR SERVICES / FACILITIES WITHIN SMALL SETTLEMENT	13
TABLE 9. SCORING SYSTEM FOR DISTANCE TO NEAREST RETAIL CENTRE	14
TABLE 10. SCORING SYSTEM FOR DISTANCE TO NEAREST INDUSTRIAL ESTATE / BUSINESS PARK	15
TABLE 11. SCORING SYSTEM FOR EMPLOYMENT OPPORTUNITIES WITH SETTLEMENT.....	15
TABLE 12. SCORING SYSTEM FOR BROADBAND COVERAGE.	16
TABLE 13. SCORING SYSTEM FOR POPULATION SIZE	18
TABLE 14. INITIAL RANKING OF SMALL SETTLEMENTS BASED ON THEIR WEIGHTED PERCENTAGE SCORES AGAINST THE FOUR PRINCIPLES.....	24
TABLE 15. INITIAL RANKING OF SMALL SETTLEMENTS BASED ON POPULATION SIZE	28
TABLE 16. INITIAL RANKING OF SMALL SETTLEMENTS BASED ON POPULATION SIZE AND THE WEIGHTED SCORE AGAINST THE FOUR PRINCIPLES.....	32

Figures:

FIGURE 1. THE SUSTAINABLE TRANSPORT HIERARCHY FOR PLANNING	17
FIGURE 2. CHART SHOWING THE TOTAL NUMBER OF SETTLEMENTS BY NUMBER OF SERVICES AVAILABLE	21
FIGURE 3. CHART SHOWING THE PROPORTION OF SMALL SETTLEMENTS BY BROADBAND COVERAGE.	23
FIGURE 4. MAP SHOWING INITIAL REPLACEMENT LDP SETTLEMENT HIERARCHY TIERS 1 TO 6.....	37

1. Introduction

1.1 This paper sits alongside the Replacement LDP Settlement Assessment, Cluster Analysis and Rural Approach background papers. The Settlement Assessment, focused on analysing the sustainability, role and function of the 58 largest settlements in the LDP area, these were the settlements identified as Towns and Large Villages in the Adopted LDP (2011-2026). This background paper looks at the settlements lower down the Adopted LDP settlement hierarchy, those falling within the definitions of a Small Village or Rural Settlement, a total of 104 smaller settlements.

1.2 Information on services, facilities, employment provision, transport opportunities and broadband, was collated and assessed for each of the 104 settlements, using a methodology consistent with that in the Settlement Assessment. This data was further supported by information on the size and population of the settlements. Further consideration has been given to the connections between the smaller settlements and the Tier 1 and Tier 2 settlements, identified in the Settlement Assessment background paper.

1.3 The paper sets out the methodology used for the assessment of the 104 smaller settlements, its subsequent application and analysis of information to provide conclusions on settlement roles and functions. It considers role and function, within the settlements themselves and in relation to other larger settlements. This forms a key part of the evidence base for the Powys Replacement LDP (2022 -2037).

Purpose

1.4 The purpose of this assessment is to identify the smaller settlements that are potentially suitable to accommodate limited future growth, in terms of their location, role and function and relationship with a higher order settlement. This involves an assessment of the current role and function of smaller settlements, as well as an understanding of the relationships between settlements and their potential future roles.

Aim

1.5 The aim of this paper, alongside the Replacement LDP Settlement Assessment, the Cluster Analysis and Rural Approach background papers, is to identify the most appropriate locations to accommodate future growth, in order to achieve a sustainable pattern of growth, minimise unsustainable patterns of movement and support rural communities, services and facilities, whilst taking into consideration the policies in Future Wales, The National Plan 2040.

1.6 This Small Settlement Assessment groups settlements into different tiers / types based upon their role and function, it is therefore a key piece of evidence informing the Replacement LDP's settlement hierarchy. However, it should be noted that the results of this assessment will form part of a larger evidence base and whilst it will give some indication of the relative sustainability of the settlements, it is necessarily a high-level assessment and there are other criteria that will also need to be taken into consideration. For instance, any decisions on whether, or not, to enable growth within settlements will also depend on issues such as local needs, environmental constraints and infrastructure capacity among other considerations.

Methodology

1.7 The methodology within the Settlement Assessment is informed by the proposed approach set out in the draft South-east Wales Strategic Planning Group (SEWSPG) Pathfinder Group Sustainable Settlement Appraisal Paper. The paper details a common methodology for sustainable settlement appraisals that has been used across the South-east Wales region. The key considerations that have been adopted from this approach include assessing settlements against the three principles:

- Principle 1: Sustainable Transport and Accessibility
- Principle 2: Availability of Facilities and Services
- Principle 3: Employment Services

1.8 Changes have been made to the methodology used in South-east Wales to make it more applicable to Powys. This includes the way broadband provision has been considered, treating it as a separate principle (Principle 4) in its own right. This approach has been undertaken due to the fact broadband provision cuts through Principles 1-3, reducing the need to travel, providing access to online services, and enabling employment opportunities. Powys is a remote rural authority where access to digital connectivity is of particular importance.

1.9 Further elements of the methodology have been adapted to ensure that it is relevant to Powys. The adapted methodology used reflects the rural nature and low population density of Powys and the fact that Powys has many relatively small settlements compared to other planning authorities in Wales.

1.10 The methodology used in the Settlement Assessment, has been modelled for this Small Settlement Assessment to reflect the lower population and more limited services and opportunities available in the smaller settlements. It identifies which settlements have a range of services and transport options available to support sustainable local communities, whilst also considering key linkages with higher order settlements. The assessment has been used to inform a separate background paper (Cluster Analysis) that identifies broad geographical clusters of settlements. Planning Policy Wales, Edition 11 (para 3.40) states that “Local service centres, or clusters of smaller settlements where a sustainable functional linkage can be demonstrated, should be designated by local authorities as the preferred locations for most new development including housing and employment provision.”

1.11 Further consideration will also be given to the relationship with settlements identified as being within Regional Growth Areas in Future Wales, The National Plan 2040.

2. Context

Background to Settlements within Powys

2.1 The predominantly rural character of Powys is illustrated by the nature of the settlements, which by national standards are comparatively small. The Adopted LDP (2011-2026) identifies 58 settlements within the two highest tiers of the settlement hierarchy. These are categorised as either Towns or Large Villages and have been identified based on the level of population and services provided. The largest town is Newtown, followed by Ystradgynlais, Welshpool and Llandrindod Wells.

2.2 Further down the Adopted LDP settlement hierarchy, are the Small Villages, of which there are 45. Within Adopted LDP Strategic Policy SP6, the Small Villages are named but do not have development boundaries or allocated sites. Housing development in Small Villages, is restricted to small infill development of two open market dwellings, or larger infill sites accommodating a maximum of five dwellings, where two are open market and the remainder are for affordable housing.

2.3 Lower down the Adopted LDP settlement hierarchy, below the Small Villages, are the Rural Settlements. Rural Settlement are identified against the criteria within Adopted LDP Strategic Policy SP5:

- Historically recognised / named settlements; and
- Contain at least 10 closely grouped dwellings (not including farm houses, rural conversions, affordable local need dwellings).

2.4 Housing development in Rural Settlements is restricted to single affordable dwellings to meet a local need.

2.5 Table 1 details the population distribution across the Adopted LDP settlement hierarchy and shows that 10% of the population live within Small Villages and Rural Settlements.

Table 1. Distribution of Population across the Adopted LDP Settlement Hierarchy

	Number of Settlements	Population (Census 2021)	% of Total
Towns	15	47,044	43%
Large Villages	43	21,281	19%
Small Villages and Rural Settlements	104	10,632	10%
Open Countryside		30,267	28%
Totals	163	109,224*	

* Total population for Powys minus 18% for BBNP.

2.6 The policy approach of not naming Rural Settlements, together with the absence of development boundaries for Small Villages (showing extent) means it is difficult to use the Adopted LDP settlement hierarchy for the purposes of this Small Settlement Assessment. Therefore, to obtain a comprehensive list of smaller settlements the analysis has utilised data from the Powys Unitary Development Plan (2001-2016) (UDP). The UDP was the precursor to the Adopted LDP and included a wider range of settlements with development boundaries within its Settlement Hierarchy. Within the UDP there were 163 named settlements with development boundaries, 58 of which went on to become the Towns and Large Villages in the Adopted LDP. The remaining 104 settlements, which would be considered as either Small Villages or Rural Settlements, in the Adopted LDP, have been assessed within this Small Settlement Assessment background paper.

2.7 The reason for considering all 104 settlements is to enable a review of the assessment that was undertaken to inform the Adopted LDP. The previous assessment prepared in 2012, was largely informed by the size of the settlement and its number of services/facilities. This review takes into consideration more recent Welsh Government priorities in relation to the sustainable transport hierarchy, place-making and supporting rural communities.

Policy Context

Future Wales – The National Plan 2040 (February 2021)

2.8 Future Wales – the National Plan 2040 is the national development framework, setting the direction for development in Wales to 2040. Future Wales sets out the following vision for Rural Wales. 'In rural areas, job opportunities and community services will be supported to help attract and retain people. A balance will be found between development and preserving the character of rural Wales, ensuring our small towns and villages have bright futures as attractive places to live and work. The rural economy will be thriving and communities will be well connected digitally and physically'. Furthermore, the Plan goes on to include the following policy in support of Rural Communities:

Policy 4 – Supporting Rural Communities

The Welsh Government supports sustainable and vibrant rural communities. Strategic and Local Development Plans must identify their rural communities, assess their needs and set out policies that support them. Policies should consider how age balanced communities can be achieved, where depopulation should be reversed and consider the role of new affordable and market housing, employment opportunities, local services and greater mobility in tackling these challenges.

2.9 How the Replacement LDP meets the needs of rural communities is considered further in the Rural Approach background paper.

Planning Policy Wales Edition 11 (February 2021)

2.10 Planning Policy Wales (Edition 11, February 2021) recognises that for most rural areas the opportunities for reducing private vehicle use and increasing walking, cycling and use of public transport are more limited than in urban areas. Due to this the guidance advises that in rural areas most new development should be located in settlements which have relatively good accessibility by non-car modes when compared to the rural area as a

whole. Development in these areas should embrace the national sustainable placemaking outcomes and, where possible, offer good Active Travel connections to the centres of settlements to reduce the need to travel by car for local journeys (para.3.39).

2.11 Additionally, Planning Policy Wales advises that “Local service centres, or clusters of smaller settlements where a sustainable functional linkage can be demonstrated, should be designated by local authorities as the preferred locations for most new development including housing and employment provision. The approach should be supported by the service delivery plans of local service providers” (para. 3.40).

Technical Advice Note 6 (TAN 6) - Planning for Sustainable Rural Communities (2010)

2.12 TAN 6 develops upon the principles outlined in Planning Policy Wales (Edition 11). With regard to informing the location of development TAN 6 advises “Development plans should set out the spatial vision for rural communities. This should be based on a sound understanding of the functional linkages within the area and the potential for improving the sustainability of the existing settlement pattern. Many rural communities can accommodate development, particularly to meet local needs. New development can help to generate wealth to support local services, ensuring that communities are sustainable in the long term” (para 2.2.1).

Development Plans Manual Edition 3 (March 2020)

2.13 Paragraph 5.15, of the Development Plans Manual, advises that Local Planning Authorities (LPA) “should undertake a settlement assessment to inform decisions regarding where development should be spatially located to achieve a sustainable pattern of growth, minimise unsustainable patterns regarding the movement of people and support local services and facilities.

2.14 Paragraph 5.15, of the Development Plans Manual also states that “The LPA must formulate a methodology for assessing the role and function of settlements which is clearly set out in the evidence base. It should be transparent regarding how settlements are being assessed, the key assessment components and how this has been applied in a consistent manner across the area. This assessment should form the basis for the settlement hierarchy, identifying which settlements are most sustainable and have capacity to deliver growth”.

3. Methodology

3.1 The methodology used for this Small Settlement Assessment follows that used in the Settlement Assessment. As detailed in the Settlement Assessment paper, regard has been given to the approach set out in the draft Sustainable Settlement Appraisal Paper (SSAP) prepared by the South-east Wales Strategic Planning Group (SEWSPG) which had regard to the Development Plans Manual. The SSAP sought to set out a common methodology for sustainable settlement appraisals to be used across the South-east Wales region.

3.2 The methodology used in both this assessment and the Settlement Assessment has diverged from the SSAP to take into consideration changes in the national policy framework. This includes updates to Planning Policy Wales and the Development Plans Manual, together with the introduction of Future Wales, The National Plan 2040 (February 2021). Local considerations have also been considered by ensuring the scoring matrix is relevant to Powys as a predominantly rural county with a low population density. This is reflected in the size of the settlements, longer travel distances and by the increased importance of digital infrastructure. Therefore, some elements of the SSAP methodology have been adapted.

3.3 A total of 104 small settlements have been subject to the Small Settlement Assessment, these are set out in the tables within Appendix 1 to 4. They include settlements defined as Small Villages or Rural Settlements, in the lower tiers of the Settlement Hierarchy within the Adopted LDP (2011-2026). However, as the Adopted LDP does not identify Rural Settlements by name and Small Villages do not have development boundaries defining extent, the small settlements have been identified using the UDP, as detailed in paragraph 2.6.

3.4 In order to effectively assess the role and function of each individual small settlement, an audit of existing services and facilities was undertaken as a desktop exercise for each settlement. The audit also gave consideration to the relationship between small settlements and the nearest higher order settlements, this is considered in more detail in the Cluster Analysis background paper. This audit was based on the Four Principles set out below:

Principle 1 - The level of sustainable transport and accessibility in and around settlements;

Principle 2 - The availability of local facilities and services in and around settlements;

Principle 3 - The level of employment opportunities in and around settlements; and

Principle 4 - The level of broadband provision

3.5 Each small settlement has been assessed against a scoring system and ranked according to its overall score. This enables the identification of broad groupings of settlements with similar roles and functions. The scoring system used is described in detail in section 3.6 to 3.21. Detailed information for each small settlement is included within Appendices 1 to 4.

Scoring System

3.6 The scoring system is based upon the Four Principles set out in paragraphs 3.4 above.

Principle 1: Sustainable Transport and Accessibility

3.7 Principle 1 focuses on sustainable transport and accessibility on the basis that its provision reduces the need to travel by car and enables access to a wider range of services by sustainable transport modes. To measure Principle 1, the following factors have been assessed: -

- The presence of cycle paths or pavements, connecting the small settlement to a higher order settlement.
- Proposed Active Travel Routes, connecting the small settlement to a higher order settlement.
- The presence of a bus service (at least daily), connecting the small settlement to a higher order settlement.
- Distance to a railway station (The distance is measured from a central address point within the small settlement to the nearest railway station via the road network).
- A settlement's proximity to a strategic highway network (Trunk or Class I (A) Road) (There must be a clear link to the network from the small settlement);
- The presence of Electric Vehicle (EV) charging points for public use within the small settlement.

Table 2. Scoring System for the Presence of Cycle Paths or Pavements, Connecting the Small Settlement to a Higher Order Settlement.

Presence of Route / Pavement	Score
Yes	5
No	0

Table 3. Scoring System for the Proposed Active Travel Routes, Connecting the Small Settlement to a Higher Order Settlement.

Proposed Active Travel Route	Score
Yes	5
No	0

Table 4. Scoring System for the Presence of a Bus Service (at least daily), Connecting the Small Settlement to a Higher Order Settlement.

Bus Service	Score
Yes	5
No	0

Table 5. Scoring System for Train Services

Train Services	Score
Railway Station in Settlement	5
Less than 1 mile	4
Between 1 and 3 miles	3
Between 3 and 5 miles	2
Between 5 and 10 miles	1
Greater than 10 miles	0

Table 6. Scoring System for Proximity to a Strategic Highway Network

Proximity to a strategic highway network	Score
Less than 1 mile	3
1-3 miles	2
3-5 miles	1
5 - 10 miles	0

Table 7. Scoring System for Presence of EV Charging Facilities (for public use) within the Small Settlement

EV Charging Facilities	Score
Provision of electric vehicle charging point within small settlement	5
None	0

3.8 It is important that a small settlement has good accessibility to services and facilities to help rural communities to meet many of their everyday needs. Good access to sustainable travel modes, that connect smaller settlements to higher order settlements, provide choice to the user and can reduce reliance on private vehicles for travel. Access to public transport also tackles an element of social exclusion and enables individuals who cannot drive, or afford a car, access to essential services and facilities. The presence of pavements and cycle routes between small settlements and higher order settlements helps to identify further opportunities to reduce the reliance on private cars and demonstrates connections between settlements.

3.9 The main railway routes through Powys are the ‘Cambrian’ and ‘Heart of Wales’ lines, providing services from Aberystwyth to Birmingham and Shrewsbury to Swansea. The assessment has also taken account of access to railway stations outside of the Plan area if these are closer to a settlement, for example the railway station at Gobowen, in Shropshire, is the closest to the settlement Llangedwyn.

3.10 The proximity to a strategic highway network is important in the rural context and reflects the inter-connectedness of each settlement and access to services, including public transport facilities, by road. This aspect of the scoring has the lowest weighting to reflect its position in the transport hierarchy. The strategic highway in this instance is defined as the Trunk and Class I (A) Roads.

3.11 The settlements that score highly under Principle 1 can be considered to be more sustainable than others due to their higher level of accessibility. Settlements that score well in this category have potential to reduce carbon emissions, promote active lifestyles, combat social isolation and provide linkages to key places (i.e., employment, medical facilities, education or recreation).

Principle 2: Availability of Facilities and Services

3.12 Principle 2 considers the ability of a settlement to provide a range of services and facilities together with the distance to the nearest retail centre.

3.13 The availability of facilities and services reflects the need for residents of a settlement to travel to access facilities / services and gives an indication as to whether the current provision of facilities / services can support its current and future population. Each settlement has been analysed in terms of number and range of services and facilities on offer. To measure Principle 2, the presence of the facilities listed in Table 8 have been assessed, together with the distance to the nearest retail centre.

3.14 When looking at the nearest retail centre, this was not restricted to the LDP area, the closest retail centre identified in an adopted LDP has been used. This includes Brecon, Hay-on-Wye and Talgarth in the Bannau Brycheiniog / Brecon Beacons National Park (BBNP).

3.15 Data was collated using a desk top exercise, therefore with regards to the presence of churches, the assessment has been based on the presence of the church, not whether it is open or not. To convert a church to an alternative use, such as residential, then planning permission is required. Where planning permission has been obtained for an alternative use then the church has been discounted from the survey.

Table 8. Scoring System for Services / Facilities within Small Settlement

Services / Facilities	Score
Food Selling Retail Shop	5
Non-Food Retail Shop	5
Café / Restaurant	5
Community / Village Hall	5
Primary School	5
Secondary School	10
Specialist School	5
Post Office / Bank (including mobile)	5
Church	5
Public House	5
Petrol Station	5
Play Park	5

Table 9. Scoring System for Distance to nearest Retail Centre

Distance to Nearest Retail Centre	Score
Less than 1 mile	5
1-3 miles	4
3-5 miles	3
5 - 10 miles	1

Principle 3: Employment Opportunities

3.16 Principle 3 relates to employment opportunities in close proximity to the small settlement. This gives an indication of the economic sustainability of an area, including the ability / potential to reduce the need to travel to work.

3.17 In considering access to employment opportunities, the scoring has been primarily based on the distance to the nearest Industrial Estates / Business Parks, as identified in an Adopted LDP (the Powys Adopted LDP (2011-2026) and BBNP Adopted LDP (2007 – 2022) and whether there are employment opportunities within the small settlement itself. It is recognised when considering the nature of the predominant employment industries in Powys, that residents will not necessarily be employed in the traditional employment use classes of B1/B2/B8. However, all the host settlements to the Industrial Estates / Business Parks, include a range of employment opportunities including in social care, retail, education and health.

3.18 With regards to employment opportunities within small settlements, a desk top exercise has been undertaken to identify properties that are registered for business rates as workshops, offices and storage units (B1/B2 and B8 use class orders).

Table 10. Scoring System for Distance to Nearest Industrial Estate / Business Park

Distance to Nearest Industrial Estate / Business Park	Score
Within Settlement	10
Less than 1 mile	8
1- 3 miles	6
3-5 miles	4
5-10 miles	1
Further than 10 miles	0

Table 11. Scoring System for Employment Opportunities with Settlement

Employment Opportunities with Settlement	Score
Yes	3
No	0

Principle 4: Broadband Provision

3.19 Principle 4 considers digital connectivity in the small settlements by looking at broadband provision. The presence of good quality broadband gives residents access to online services such as training and healthcare, informs the location of businesses, enables homeworking and can reduce the need to travel.

3.20 The growth in homeworking is supported by Welsh Government who announced in September 2020 that they have a long-term ambition for around 30% of the Welsh workforce to work remotely either from home or near to home using community-based remote working hubs.

3.21 The criteria and scoring used is based on looking at the percentage of properties within the small settlements that have broadband speeds of at least 30 megabits per second (Mbps). 30 Mbps is considered the minimum speed required to enable effective digital connectivity for homeworking, access to services and business use. The 30 Mbps plus threshold, includes properties benefitting from fibre to cabinet and fibre to premises infrastructure. Therefore, the actual Mbps speeds in many cases will be higher, however they may be limited by the broadband package procured by residents rather than any available infrastructure.

Table 12. Scoring System for Broadband Coverage.

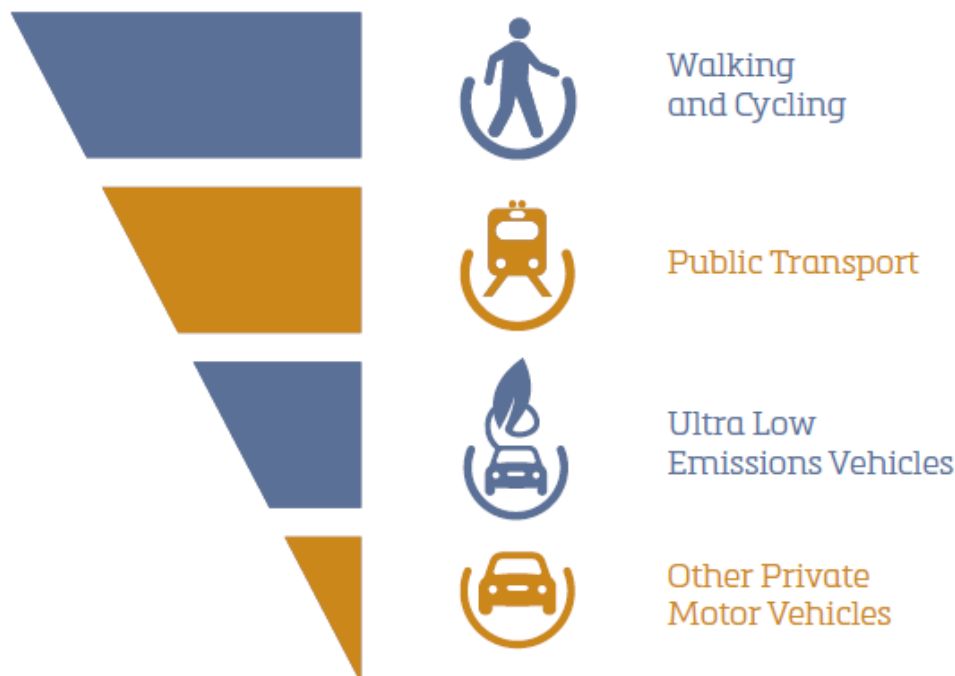
Broadband Coverage	Score
100% of premises receive 30=>Mbps	5
81%-99% of premises receive 30=>Mbps	4
51%-80% of premises receive 30=>Mbps	3
41%-60% of premises receive 30=>Mbps	2
21%-40% of premises receive 30=>Mbps	1
0%-20% of premises receive 30=>Mbps	0

Weighting

3.22 The criteria and scoring set out in sections 3.6 to 3.21, reflect the role sustainable transport, employment opportunities, access to services and digital connectivity play in meeting the resident population's daily needs and the need to reduce travel distances to access services and facilities.

3.23 Based on this each of the Four Principles is weighted to reflect their importance to the sustainability of settlements. Planning Policy Wales: Edition 11 (para 4.1.9) details Welsh Government's commitment to reducing reliance on the private car and supporting a modal shift to walking, cycling and public transport. It is, therefore, Welsh Government policy to require the use of a sustainable transport hierarchy in relation to the planning of new development as shown in the Figure 1.

Figure 1. The Sustainable Transport Hierarchy for Planning



Source: Planning Policy Wales Edition 11 (February 2021)

3.24 To align the Settlement Assessment to the requirements set out in Planning Policy Wales regarding sustainable transport, the criteria for Principle 1 – Sustainable Transport and Accessibility represents 35% of the overall score. Subsequently, Principles 2 and 3 have an overall score of 30% each. To reflect the importance of digital connectivity to Powys reducing travel and enabling access to services Principle 4 has an overall score of 5%.

3.25 The maximum weighted percentage score that can be achieved for a settlement against the Four Principles is 100%.

Population Size

3.26 The Development Plans Manual (Edition 3) recommends (Figure 1) that the size of a settlement is taken into account in the Settlement Assessment. Therefore, once the Four Principles have been scored and weighted for each settlement, additional points are attributed to settlements based on their population size.

3.27 For the purposes of the assessment, population figures are derived from calculating the average household size for overlapping Census Output Areas using data from the 2021 Census and then multiplying this number by the number of residential properties within the settlement itself. The population calculations, therefore, have been based on the number of people within (and in some cases adjacent, where new developments have occurred) Powys UDP development boundaries and may differ to data quoted in other sources.

Table 13. Scoring System for Population Size

Population Size	Score
300+	50
226 – 300	40
151 – 225	30
76 – 150	20
0 – 75	10

4. Sustainable Settlements Assessment

Initial Ranking of Settlements based on the Four Principles

4.1 The Development Plans Manual Edition 3 (March 2020) recommends that LPAs should consider the most practicable way of presenting the results of the settlement assessments, such as a scoring system, or RAG (Red, Amber, and Green) analysis with this assessment forming the basis for the settlement hierarchy, identifying which settlements are most sustainable and have capacity to deliver growth. For this appraisal a scoring system has been used to undertake the initial assessment of the small settlements.

4.2 Following the initial scoring of the settlements against the Four Principles, the scores have been weighted to reflect the importance of transport services and accessibility to the sustainability of settlements, with the maximum percentage achievable for Principle 1 being 35%, Principles 2 and 3, 30% and Principle 4, 5% respectively. The scores achieved by each settlement against each of the Four Principles are set out in Appendices 1 to 4, with the final column showing the weighted percentage achieved by each settlement. The settlements are ranked by this weighted score in each of the tables with those settlements scoring the highest at the top.

Principle 1 - Sustainable Transport and Accessibility

4.3 Appendix 1 shows that there is a wide disparity between the 104 small settlements assessed in terms of their sustainable transport links and accessibility.

4.4 The top three scoring small settlements are Penegoes, Derwenlas and Welshpool Buttington. Penegoes is approximately two miles to the east of Machynlleth, connected via the strategic highway network that benefits from a pavement and bus services. Further opportunities for Penegoes to have Active Travel connections with Machynlleth have been published in the future Active Travel Network Maps. Residents in Penegoes also have access to train services via the railway station in Machynlleth. Similarly, to Penegoes, Derwenlas is a small settlement that is located on a bus route, approximately one and a half miles to the south west of Machynlleth and about three miles from the Dovey Junction railway station. Derwenlas is connected to Machynlleth via a cycle path / pavement, with plans for the route to be improved further published in the future Active Travel Network Maps.

4.5 Welshpool Buttington is located less than a mile away from Welshpool's north eastern development boundary (less than two miles from the town centre and the railway station). Welshpool and Welshpool Buttington are connected via the strategic highway network that benefits from a pavement and bus services. Further improvements to the Active Travel connection between Welshpool Buttington and Welshpool have been published in the future Active Travel Network Maps.

4.6 There are a further four settlements scoring highly under Principle 1. These are:

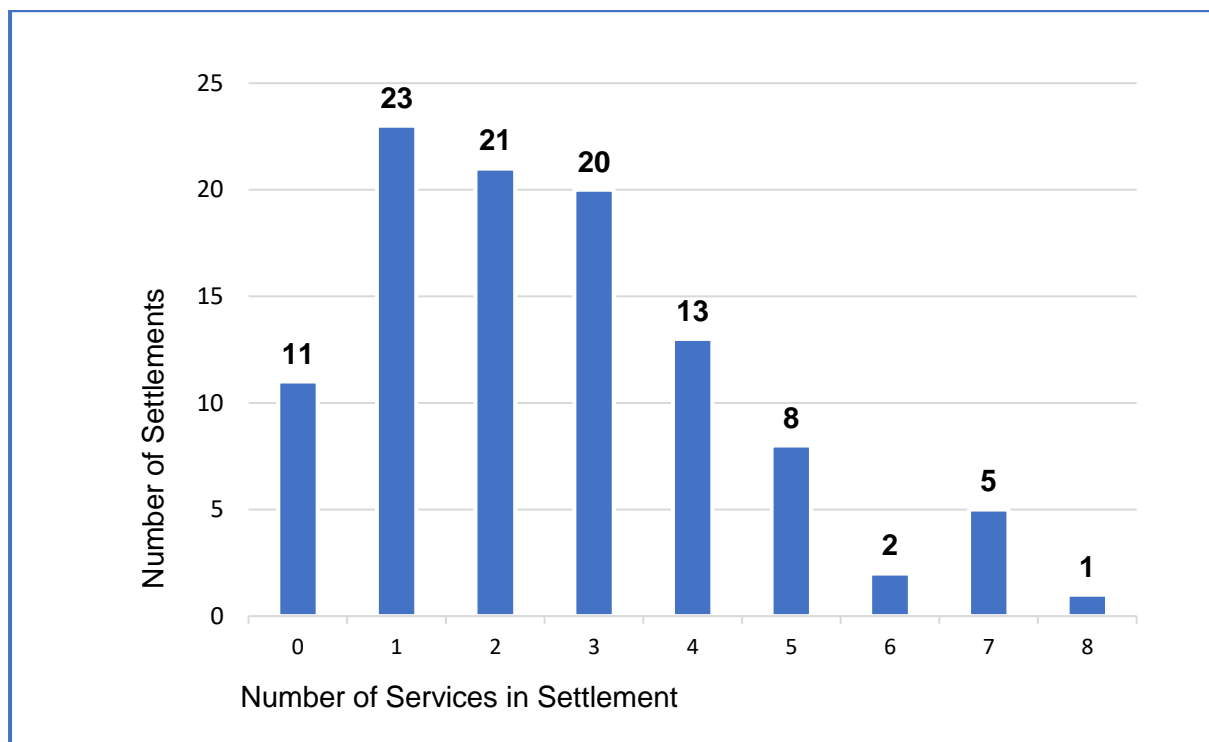
- Builth Road - has its own railway station and is in close proximity to Builth Wells with pedestrian / cycle path connections. Further improvements to Active Travel between the two settlements have been published in the future Active Travel route maps.
- Elan Village – connected to Rhayader via a cycle path and bus services. Further options for sustainable travel are available through the provision of EV charging points at the Elan Valley Visitor Centre.
- Groes-lwyd – this small settlement is located adjacent to Guilsfield and connected via a pavement. Both Guilsfield and Groes-lwyd are located on a bus route and have strong connections with Welshpool, which is less than three miles away.
- Cilmerly – is another settlement with its own railway station, within two miles of Builth Wells. There are regular bus services connecting the two settlements, but there are currently no pavements between them. However, an Active Travel connection is shown as an aspirational route in the future Active Travel Network Maps.

4.7 How the small settlements relate to higher order settlements, including the wider provision to a range of transport options are considered in the Cluster Analysis background paper.

Principe 2 – Availability of Facilities and Services

4.8 Appendix 2 shows that of the 104 small settlements, 11 (11%) have none of the services / facilities outlined in Section 3. A further 44 (42%) of the settlements have two services / facilities or less, which in many cases includes a church or chapel that has limited use.

Figure 2. Chart Showing the Total Number of Settlements by Number of Services Available



4.9 The settlement with the most services and facilities available and consequently scoring the highest is Llangadfan. Llangadfan is located between the Foel and Llanerfyl, with all three small settlements being more than five miles from the nearest Tier 1 / Tier 2 settlement. It is therefore likely, that some of the services and facilities offered by Llangadfan are used not only by the residents of Llangadfan itself, but also by the residents of other neighbouring small settlements.

4.10 The next highest scoring settlement is Beulah, where services and facilities include a petrol station with a shop, and a public house selling food. Beulah is located between Builth Wells and Llanwrtyd Wells, on one of the main trunk roads through mid-Wales (the A483), so services and facilities, such as the petrol station, shop and pub, are supported by passing trade as well as local residents.

Principle 3 – Employment Opportunities

4.11 Appendix 3 shows that the small settlement, Welshpool Buttington, has the most access to employment opportunities. Welshpool Buttington is located on the outskirts of the Tier 1 settlement, Welshpool and whilst residents of the small settlement are located within close proximity to the industrial parks within Welshpool, the small settlement also hosts some of the industrial estates / business parks that serve the town of Welshpool itself.

4.12 There are a further 15 small settlements that score a total of nine points, out of the 13 maximum. All 15 small settlements are located less than three miles from a business park / industrial estate (some of which are located within the BBNP) and have small scale employment opportunities within the small settlement itself, in terms of properties registered for business rates.

4.13 Further consideration is given to the relationship between small settlements and higher order settlements with industrial estates / business parks, including accessibility, in the Cluster Analysis background paper.

4.14 Appendix 3 also shows that seven of the small settlements had very limited access to traditional employment opportunities. All seven settlements are located more than ten miles from the nearest industrial estate / business park and had no properties registered for employment uses, under business rates. However, the Annual Population Survey (2021) identified Powys' highest employment industry category as "wholesale, retail, transport, hotels, and food" with 16,400 jobs, this equates to 27% of Powys' overall employment. A further 21% (12,900) of Powys' employment is in the category "public administration, defence, education, and health". The 2021 Census categorised employment industries slightly differently but found similar results. Small Settlements with access to these wider categories of jobs will score highly under Principle 2 – Availability of Facilities and Services, which will feed into the overall scoring / ranking system.

4.15 The 2021 Census found that of the total population aged over sixteen, 5,824 people (includes BBNP data) were employed in the category agriculture, forestry and fishing. It could therefore be expected that this is one of the main employers in the smaller more remote settlements. This is considered further in the Rural Approach background paper.

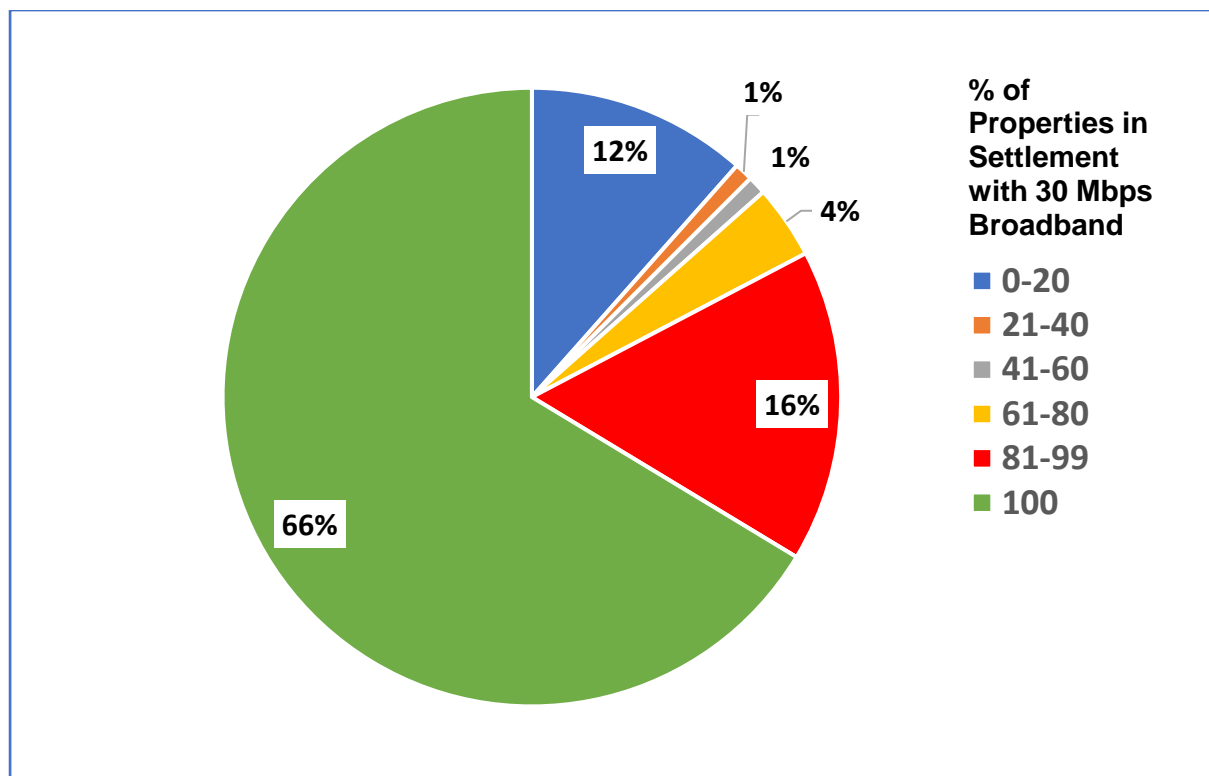
4.16 Principle 4 – Broadband Provision considers opportunities that maybe available within the small settlements for home working (where an internet connection is required).

Principle 4 – Broadband Provision

4.17 Principle 4 is based on using the Open Market Review data (2021) to assess the percentage of properties within settlements that have broadband speeds of at least 30 megabits per second (Mbps). 30 Mbps is considered the minimum speed required to enable effective digital connectivity for homeworking, access to services and business use.

4.18 Appendix 4 and Figure 3 show that according to the 2021 Open Market Review data, 69 (66%) of the 104 small settlements, had broadband speeds of at least 30 Mbps available for every property within the settlement. However, 12 settlements, according to the 2021 Review, had no broadband coverage of 30 Mbps or more.

Figure 3. Chart Showing the Proportion of Small Settlements by Broadband Coverage.



5. Ranking of Settlements

Initial Ranking of Settlements based on their Weighted Scores against the Four Principles

5.1 The small settlements have been assessed by dividing the top score for each principle into three equal categories. The top scoring group is highlighted in green, the middle group in amber and the lowest scoring group in red. Similarly, the 'Total' score has been grouped by dividing the top score (74) into three equal categories:

- Green: 50-74
- Amber: 25-49
- Red: 0-24

5.2 Using this combination of scoring and colour coding Table 14 provides an initial hierarchy of the settlements included in this assessment.

Table 14. Initial Ranking of Small Settlements based on their Weighted Percentage Scores against the Four Principles

Settlement Name	Transport 35%	Services 30%	Employment 30%	Broadband 5%	Total
Welshpool Buttington	27	12	30	5	74
Derwenlas	27	12	21	5	65
Penegoes	27	7	21	4	59
Builth Road	22	10	21	5	57
Cilmerly	21	10	21	4	55
Leighton	13	15	21	5	53
Groes-lwyd	21	10	14	5	49
Garthmyl	19	7	16	5	46
Elan Village	21	9	16	0	46
Dolfor	14	9	16	5	44
Llangadfan	12	21	7	5	44
Pant y dwr	8	14	16	5	43
Norton	18	5	21	0	43
Llandyssil	4	15	21	4	43
Sarn	13	16	9	5	43
Aberbechan	14	2	21	5	42
Llanbister	16	18	2	5	42
Llangammarch Wells	15	12	9	5	41
Cwmbelan	11	5	21	5	41
Esgairgeiliog Ceinws	13	7	16	5	40

Settlement Name	Transport 35%	Services 30%	Employment 30%	Broadband 5%	Total
Beulah	15	19	2	4	40
Glantwymyn	13	13	9	5	40
Penybont	15	11	9	5	40
Garth	18	8	9	5	40
St Harmon	9	9	16	5	39
Stepaside	8	5	21	5	39
Llanddew	4	10	21	5	39
Llanigon	4	10	21	5	39
Caerhowel	11	7	16	5	39
Fron Bank	9	5	21	4	39
Cemmaes	13	18	2	5	38
Bwlch-y-cibau	13	12	9	4	38
Cwmbach	8	3	21	5	37
Caehopkin	12	2	21	1	35
Cwm Linau	13	8	9	5	35
Llandewi Ystradenni	15	6	9	5	35
Pool Quay	14	7	9	5	35
Groesffordd	11	10	9	5	34
Llanerfyl	12	11	7	5	34
Llangedwyn	8	17	9	0	34
Felinfach	11	9	9	5	34
Gladestry	4	18	9	3	34
Refail	13	7	9	5	34
Y Fan	5	10	14	5	33
Evenjobb	11	8	9	5	33
Tanhouse	11	8	9	5	33
Erwood	13	13	2	4	32
Walton	13	6	9	4	32
Velindre (Brecknock)	4	9	14	5	31
Sarnau , Mont.	5	6	16	4	30
Kinnerton	11	6	9	5	30
Llanfihangel	2	12	16	0	30
Llowes	12	4	9	5	30
Coedway	8	13	9	0	30
Llanwrin	7	2	16	5	30

Settlement Name	Transport 35%	Services 30%	Employment 30%	Broadband 5%	Total
Llanwrthyl	12	7	9	2	29
Llanbadarn Fynydd	12	13	0	5	29
Pen-y-bont Llanerch Emrys	9	6	9	5	29
Cefn Gorwydd	13	5	7	4	28
Adfa	4	11	9	5	28
Forge	8	2	14	4	28
Ffynnon Gynydd	4	3	16	5	28
Abercegir	6	2	16	4	27
Cradoc	4	5	14	5	27
Foel	12	3	7	5	27
Aberhafesp	6	7	9	5	27
Whitton	6	7	9	5	27
Commins Coch	13	1	9	4	27
Llanwddyn	1	11	9	5	26
Clatter	15	3	2	5	25
Llanfilo	5	7	9	5	25
Llanwnog	8	3	9	5	25
Llangunllo	7	11	2	5	25
Abertridwr	1	18	2	3	24
Rhosgoch	2	1	16	5	24
Aberedw	6	11	2	5	24
Bleddfa	8	8	2	5	23
Beguildy	8	13	2	0	23
Llandegley	13	3	2	5	23
Aberhosan	2	7	9	5	23
Painscastle	2	8	9	3	23
Lloyney	12	2	9	0	22
Hundred House	7	8	2	5	22
Abbeycwmhir	4	11	2	5	21
Llanfihangel Tal-y-llyn	4	11	2	5	21
Nantglas	5	3	9	4	21
Nantmel	7	4	9	0	20
Battle	2	5	9	4	20
Dolau	11	3	2	4	20
Old Radnor	6	6	2	5	19

Settlement Name	Transport 35%	Services 30%	Employment 30%	Broadband 5%	Total
Frank's Bridge	6	6	2	4	18
Manafon	2	9	0	5	16
Lower Chapel	1	7	2	5	15
Darowen	5	3	2	5	15
New Mills	4	4	2	5	15
Felindre	8	6	0	0	14
Talerddig	13	0	0	0	13
Llawr-y-glyn	2	3	2	5	13
Newchurch	2	3	2	5	13
Bwlch-y-ffridd	5	1	2	5	12
Dolanog	2	6	2	0	10
Llan	4	3	0	3	9
Bont-dolgadfan	4	0	0	5	9
Cefn Coch	2	4	0	0	6

Initial Ranking of Settlements based on Population Size

5.3 The Development Plans Manual Edition 3 (March 2020) recommends that the size of a settlement be taken into account in a settlement assessment, in addition to the considerations that have been covered under the Four Principles. Table 15 shows the scores given to each settlement based on its population size, in accordance with the categories set out in Table 13. Please note that population calculations are based on the populations within or close to the Powys UDP development boundaries and may differ to data quoted in other sources.

Table 15. Initial Ranking of Small Settlements based on Population Size

Small Settlement	Dwellings in Settlement	Census HH size x no properties	Category	Score
Norton	178	370	300+	50
Caehopkin	122	297	226-300	40
Llanfihangel Tal-y-llyn	120	278	226-300	40
Penegoes	119	275	226-300	40
Llandyssil	106	250	226-300	40
Llangammarch Wells	108	228	226-300	40
Penybont	89	218	151-225	30
Llanerfyl	82	214	151-225	30
Llangadfan	91	207	151-225	30
Cilmery	83	197	151-225	30
Sarn	88	191	151-225	30
Stepaside	78	181	151-225	30
St Harmon	71	176	151-225	30
Llanddew	77	170	151-225	30
Erwood	78	164	151-225	30
Adfa	69	162	151-225	30
Caerhowel	63	161	151-225	30
Y Fan	68	159	151-225	30
Esgairgeiliog Ceinws	64	158	151-225	30
Beulah	74	150	76-150	20
Cemmaes	68	147	76-150	20
Garth	71	147	76-150	20
Llanigon	60	136	76-150	20
Evenjobb	60	134	76-150	20
Leighton Pentre	58	130	76-150	20

Small Settlement	Dwellings in Settlement	Census HH size x no properties	Category	Score
Llanwnog	48	122	76-150	20
Llandewi Ystradenni	56	120	76-150	20
Builth Road	54	120	76-150	20
Painscastle	50	118	76-150	20
Pant y dwr	51	116	76-150	20
Cwm Linau	48	114	76-150	20
Foel	49	113	76-150	20
Gladestry	47	112	76-150	20
Aberhafesp	49	109	76-150	20
Abertridwr	46	109	76-150	20
Glantwymyn	48	104	76-150	20
Refail	48	104	76-150	20
Rhosgoch	44	104	76-150	20
Aberedw	49	103	76-150	20
Llangunllo	46	103	76-150	20
Llanbister	44	100	76-150	20
Battle	41	97	76-150	20
Frank's Bridge	41	96	76-150	20
Commins Coch	43	95	76-150	20
Felinfach	45	95	76-150	20
Coedway	39	92	76-150	20
Llangedwyn	38	92	76-150	20
Forge	39	91	76-150	20
Abercegir	41	91	76-150	20
Derwenlas	39	89	76-150	20
Cefn Coch	37	87	76-150	20
Bwlch-y-cibau	35	85	76-150	20
Clatter	38	85	76-150	20
Groesffordd	44	84	76-150	20
Llanwrthyl	35	81	76-150	20
Whitton	35	80	76-150	20
Bwlch-y-ffridd	35	78	76-150	20
Llanfilo	32	77	76-150	20
Manafon	34	76	76-150	20
Garthmyl	35	76	76-150	20

Small Settlement	Dwellings in Settlement	Census HH size x no properties	Category	Score
Llanwddyn	32	76	0-75	10
Elan Village	31	72	0-75	10
Hundred House	30	72	0-75	10
Llowes	34	70	0-75	10
Beguildy	31	70	0-75	10
Llawr-y-glyn	31	69	0-75	10
Groes-lwyd	28	66	0-75	10
Llanwrin	26	64	0-75	10
Lloyney	29	63	0-75	10
Bont-dolgadfan	30	62	0-75	10
Llanbadarn Fynydd	26	62	0-75	10
Pool Quay	27	62	0-75	10
Llan	29	60	0-75	10
Cwmbelan	24	58	0-75	10
Velindre (Brecknock)	24	56	0-75	10
Sarnau , Mont.	23	56	0-75	10
Cefn Gorwydd	29	56	0-75	10
Dolanog	25	55	0-75	10
Kinnerton	25	55	0-75	10
Cradoc	23	54	0-75	10
Llandegley	22	54	0-75	10
Tanhouse	25	54	0-75	10
Old Radnor	23	54	0-75	10
Aberhosan	23	53	0-75	10
Lower Chapel	21	52	0-75	10
Dolfor	21	52	0-75	10
Darowen	23	51	0-75	10
Felindre	22	49	0-75	10
Llanfihangel	22	49	0-75	10
Ffynnon Gynydd	20	48	0-75	10
Pen-y-bont Llanerch Emrys	19	46	0-75	10
New Mills	20	45	0-75	10
Fron Bank	19	44	0-75	10
Nantglas	21	43	0-75	10

Small Settlement	Dwellings in Settlement	Census HH size x no properties	Category	Score
Walton	17	43	0-75	10
Bleddfa	19	43	0-75	10
Nantmel	18	42	0-75	10
Newchurch	17	41	0-75	10
Aberbechan	17	40	0-75	10
Abbeycwmhir	15	37	0-75	10
Dolau	17	37	0-75	10
Cwmbach	15	34	0-75	10
Talerddig	14	32	0-75	10
Welshpool Buttlington	8	19	0-75	10

Initial Ranking of Small Settlements based on Combined Population Size and Weighted Score against the Four Principles

5.4 The small settlements have been assessed by adding the weighted score, from the Four Principles to the population score. The 'Total' scores have then been grouped by dividing the top score (99) into three equal categories:

- Green: 67- 99
- Amber: 34 - 66
- Red: 0 - 33

5.5 Using this combination of scoring and colour coding Table 16 provides an initial hierarchy of the settlements included in this assessment.

Table 16. Initial Ranking of Small Settlements based on Population Size and the Weighted Score against the Four Principles

Settlement Name	Weighted Score	Population Score	Total
Penegoes	59	40	99
Norton	43	50	93
Cilmerly	55	30	85
Derwenlas	65	20	85
Welshpool Buttington	74	10	84
Llandyssil	43	40	83
Llangammarch Wells	41	40	81
Builth Road	57	20	77
Caehopkin	35	40	75
Llangadfan	44	30	74
Leighton	53	20	73
Sarn	43	30	73
Esgairgeiliog Ceinws	40	30	70
Penybont	40	30	70
St Harmon	39	30	69
Stepaside	39	30	69
Llanddew	39	30	69
Caerhowel	39	30	69
Garthmyl	46	20	66
Llanerfyl	34	30	64
Pant y dwr	43	20	63
Y Fan	33	30	63
Erwood	32	30	62
Llanbister	42	20	62

Settlement Name	Weighted Score	Population Score	Total
Llanfihangel Tal-y-llyn	21	40	61
Beulah	40	20	60
Glantwymyn	40	20	60
Garth	40	20	60
Groes-lwyd	49	10	59
Llanigon	39	20	59
Adfa	28	30	58
Cemmaes	38	20	58
Bwlch-y-cibau	38	20	58
Elan Village	46	10	56
Cwm Linau	35	20	55
Llandewi Ystradenni	35	20	55
Groesffordd	34	20	54
Dolfor	44	10	54
Llangedwyn	34	20	54
Felinfach	34	20	54
Gladestry	34	20	54
Refail	34	20	54
Evenjobb	33	20	53
Aberbechan	42	10	52
Cwmbelan	41	10	51
Coedway	30	20	50
Llanwrthyl	29	20	49
Fron Bank	39	10	49
Forge	28	20	48
Abercegir	27	20	47
Cwmbach	37	10	47
Foel	27	20	47
Aberhafesp	27	20	47
Commins Coch	27	20	47
Whitton	27	20	47
Clatter	25	20	45
Llanfilo	25	20	45
Llanwnog	25	20	45
Llangunllo	25	20	45

Settlement Name	Weighted Score	Population Score	Total
Pool Quay	35	10	45
Abertridwr	24	20	44
Rhosgoch	24	20	44
Aberedw	24	20	44
Tanhouse	33	10	43
Painscastle	23	20	43
Walton	32	10	42
Velindre (Brecknock)	31	10	41
Sarnau , Mont.	30	10	40
Kinnerton	30	10	40
Battle	20	20	40
Llanfihangel	30	10	40
Llanwrin	30	10	40
Llowes	30	10	40
Llanbadarn Fynydd	29	10	39
Pen-y-bont Llanerch Emrys	29	10	39
Cefn Gorwydd	28	10	38
Ffynnon Gynydd	28	10	38
Frank's Bridge	18	20	38
Cradoc	27	10	37
Manafon	16	20	36
Llanwddyn	26	10	36
Beguilyd	23	10	33
Bleddfa	23	10	33
Llandegley	23	10	33
Aberhosan	23	10	33
Bwlch-y-ffridd	12	20	32
Lloyney	22	10	32
Hundred House	22	10	32
Abbeycwmhir	21	10	31
Nantglas	21	10	31
Nantmel	20	10	30
Dolau	20	10	30
Old Radnor	19	10	29
Cefn Coch	6	20	26

Settlement Name	Weighted Score	Population Score	Total
Darowen	15	10	25
Lower Chapel	15	10	25
New Mills	15	10	25
Felindre	14	10	24
Talerddig	13	10	23
Llawr-y-glyn	13	10	23
Newchurch	13	10	23
Dolanog	10	10	20
Llan	9	10	19
Bont-dolgadfan	9	10	19

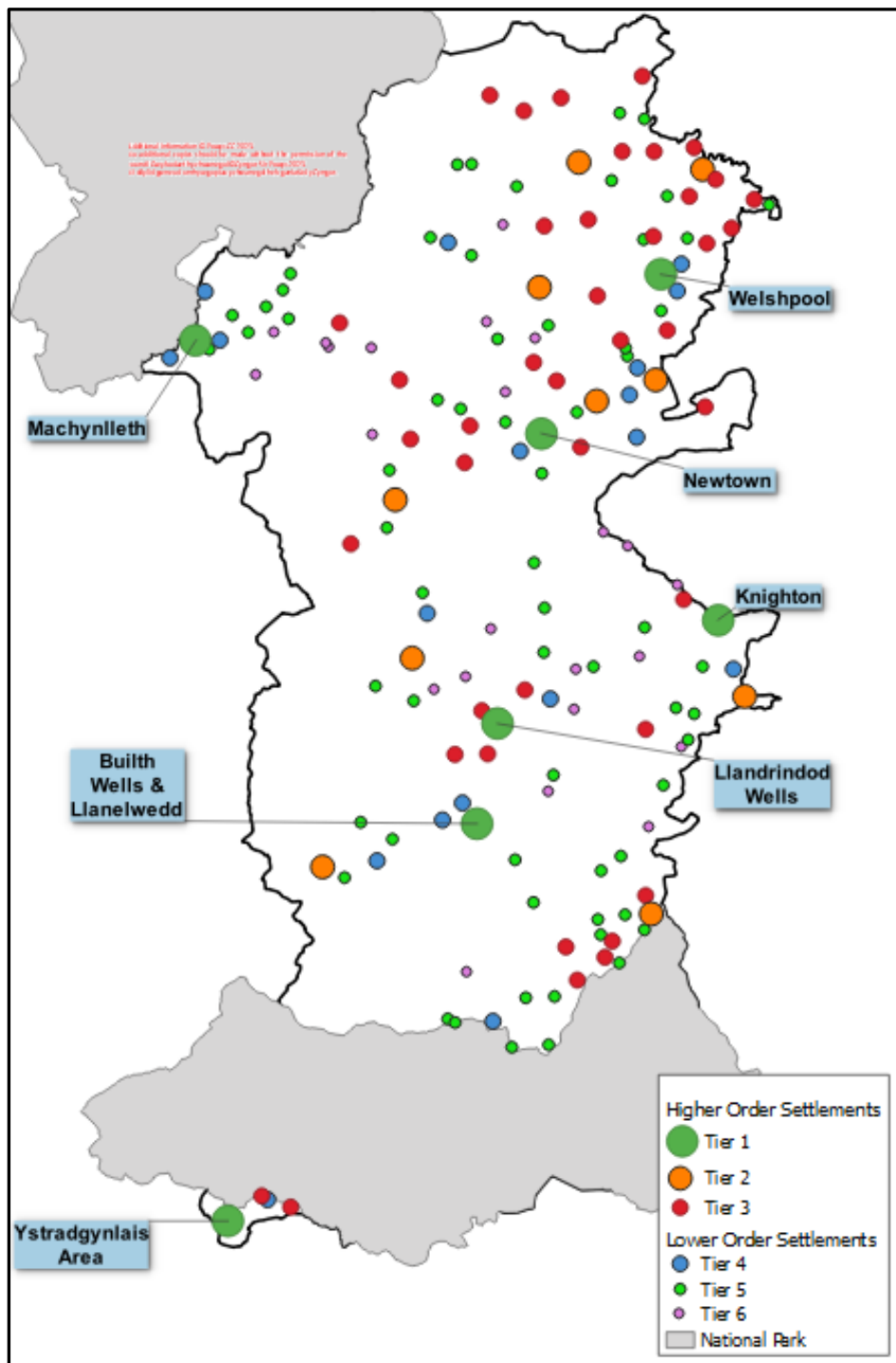
6. Key Findings and Recommendations

6.1 Table 16 effectively splits the small settlements into three tiers. The Settlement Assessment which looked at the larger settlements in the Powys LDP area, also categorised the larger settlements into three tiers. With the larger settlements making up tiers one to three, the three categories in this Small Settlement Assessment make up tiers four to six, forming the initial basis of a settlement hierarchy. Figure 4 shows the spatial distribution of the six tiers.

6.2 Consideration is given to the relationships between settlements within the 'Cluster Analysis' background paper, which looks in detail at how lower tiered settlements relate to the Tier 1 and Tier 2 settlements.

6.3 Further consideration is given in **xxxx** on how the initial Replacement LDP Settlement Hierarchy relates to the Mid Wales Region, including the Regional Growth Areas, identified in Future Wales, Rural Areas (as defined in the Rural Approach background paper) and Phosphorus Sensitive Riverine Special Areas of Conservation. In the determination of the Replacement LDP Strategic Options further consideration is also given to the Welsh language, community aspirations and alignment with other plans and strategies.

Figure 4. Map Showing Initial Replacement LDP Settlement Hierarchy Tiers 1 to 6.



Appendix 1- Principle 1 – Sustainable Transport and Accessibility

Settlement Name	Easting	Northing	Presence of Cycle Paths or Pavements, Connecting the Small Settlement to a Higher Order Settlement	Score	Proposed Active Travel Routes, Connecting the Small Settlement to a Higher Order Settlement	Score	Presence of a Bus Service (at least daily), Connecting the Small Settlement to a Higher Order Settlement	Score	Proximity to Train Services	Score	Proximity to a Strategic Highway Network	Score	EV Charging Points within Settlement for Public Use	Score	TOTAL SCORE	Weighted % (35%)
Penegoes	277457.3	300940.3	Yes	5	Yes	5	Yes	5	1-3 miles	3	In Settlement	5	No	0	23	27%
Welshpool Buttington	324978.8	308790.6	Yes	5	Yes	5	Yes	5	1-3 miles	3	In Settlement	5	No	0	23	27%
Derwenlas	272305.1	299119.3	Yes	5	Yes	5	Yes	5	1-3 miles	3	In Settlement	5	No	0	23	22%
Builth Road	302436.8	253252.3	Yes	5	Yes	5	No	0	In Settlement	5	Less than 1 mile	4	No	0	19	21%
Elan Village	293481	265298.4	Yes	5	No	0	Yes	5	10 miles or more	0	1-3 miles	3	Yes	5	18	21%
Groes-lwyd	321087.6	311311.1	Yes	5	No	0	Yes	5	1-3 miles	3	In Settlement	5	No	0	18	21%
Cilmery	300383.8	251491.1	No	0	Yes	5	Yes	5	In Settlement	5	1-3 miles	3	No	0	18	27%
Garthmyl	319415.7	299301.9	Yes	5	No	0	Yes	5	5 - 10 miles	1	In Settlement	5	No	0	16	19%
Norton	330348	267051.8	No	0	Yes	5	Yes	5	3-5 miles	2	1-3 miles	3	No	0	15	18%
Garth	295226.5	249520.5	No	0	No	0	Yes	5	In Settlement	5	In Settlement	5	No	0	15	18%
Llanbister	310884.9	273349.7	No	0	No	0	Yes	5	Less than 1 mile	4	In Settlement	5	No	0	14	16%
Penybont	311495.7	263981.1	No	0	No	0	Yes	5	1-3 miles	3	In Settlement	5	No	0	13	15%
Llandewi Ystradenni	310813.2	268771.8	No	0	No	0	Yes	5	1-3 miles	3	In Settlement	5	No	0	13	15%
Llangammarch Wells	293635.6	247297.2	No	0	No	0	Yes	5	In Settlement	5	1-3 miles	3	No	0	13	15%
Clatter	299877.3	294789.8	No	0	No	0	Yes	5	1-3 miles	3	In Settlement	5	No	0	13	15%
Beulah	291959.5	251261	No	0	No	0	Yes	5	1-3 miles	3	In Settlement	5	No	0	13	15%
Aberbechan	314226.2	293519.8	Yes	5	No	0	No	0	1-3 miles	3	Less than 1 mile	4	No	0	12	14%
Dolfor	310614.6	287202.3	No	0	No	0	Yes	5	3-5 miles	2	In Settlement	5	No	0	12	14%
Pool Quay	325596.2	311447.5	Yes	5	No	0	No	0	3-5 miles	2	In Settlement	5	No	0	12	14%
Leighton	324563.5	306016.2	No	0	No	0	Yes	5	1-3 miles	3	1-3 miles	3	No	0	11	13%
Walton	325679.2	259772.3	No	0	No	0	Yes	5	5 - 10 miles	1	In Settlement	5	No	0	11	13%

Settlement Name	Easting	Northing	Presence of Cycle Paths or Pavements, Connecting the Small Settlement to a Higher Order Settlement	Score	Proposed Active Travel Routes, Connecting the Small Settlement to a Higher Order Settlement	Score	Presence of a Bus Service (at least daily), Connecting the Small Settlement to a Higher Order Settlement	Score	Proximity to Train Services	Score	Proximity to a Strategic Highway Network	Score	EV Charging Points within Settlement for Public Use	Score	TOTAL SCORE	Weighted % (35%)
Llandegley	313923.8	262915.2	No	0	No	0	Yes	5	5 - 10 miles	1	In Settlement	5	No	0	11	13%
Bwlch-y-cibau	317796.7	317395.2	No	0	No	0	Yes	5	5 - 10 miles	1	In Settlement	5	No	0	11	13%
Sarn	320380.1	290942.8	No	0	No	0	Yes	5	5 - 10 miles	1	In Settlement	5	No	0	11	13%
Refail	319227.8	300135.1	Yes	5	No	0	No	0	5 - 10 miles	1	In Settlement	5	No	0	11	13%
Cefn Gorwydd	290289.9	245565.6	No	0	No	0	Yes	5	1-3 miles	3	1-3 miles	3	No	0	11	13%
Erwood	309750.2	243001.4	No	0	No	0	Yes	5	5 - 10 miles	1	In Settlement	5	No	0	11	13%
Esgairgeiliog Ceinws	275928.7	305951.5	No	0	No	0	Yes	5	3-5 miles	2	Less than 1 mile	4	No	0	11	13%
Commins Coch	284525.2	303147.6	No	0	No	0	Yes	5	5 - 10 miles	1	In Settlement	5	No	0	11	13%
Cemmaes	283932.6	306119.7	No	0	No	0	Yes	5	5 - 10 miles	1	In Settlement	5	No	0	11	13%
Cwm Linau	284722.8	307795.1	No	0	No	0	Yes	5	5 - 10 miles	1	In Settlement	5	No	0	11	13%
Glantwymyn	282205.5	304391.9	No	0	No	0	Yes	5	5 - 10 miles	1	In Settlement	5	No	0	11	13%
Talerddig	293045.7	300165.9	No	0	No	0	Yes	5	5 - 10 miles	1	In Settlement	5	No	0	11	13%
Lloyney	324572.8	275743.5	No	0	No	0	Yes	5	1-3 miles	3	3-5 miles	2	No	0	10	12%
Caehopkin	282376.7	212379.4	No	0	No	0	Yes	5	10 miles or more	0	In Settlement	5	No	0	10	12%
Llowes	319181.4	241734.3	No	0	No	0	Yes	5	10 miles or more	0	In Settlement	5	No	0	10	12%
Llanwrthyl	297416.9	263779.8	No	0	No	0	Yes	5	5 - 10 miles	1	Less than 1 mile	4	No	0	10	12%
Llanerfyl	303365.5	309671.6	No	0	No	0	Yes	5	10 miles or more	0	In Settlement	5	No	0	10	12%
Llangadfan	300974.4	311011.5	No	0	No	0	Yes	5	10 miles or more	0	In Settlement	5	No	0	10	12%
Llanbadarn Fynydd	309809.5	278013.6	No	0	No	0	Yes	5	10 miles or more	0	In Settlement	5	No	0	10	12%
Foel	299134.2	311527.5	No	0	No	0	Yes	5	10 miles or more	0	In Settlement	5	No	0	10	12%
Kinnerton	324428.2	263059.3	No	0	No	0	Yes	5	5 - 10 miles	1	1-3 miles	3	No	0	9	11%
Dolau	314217.4	266957.8	No	0	No	0	No	0	In Settlement	5	Less than 1 mile	4	No	0	9	11%

Settlement Name	Easting	Northing	Presence of Cycle Paths or Pavements, Connecting the Small Settlement to a Higher Order Settlement	Score	Proposed Active Travel Routes, Connecting the Small Settlement to a Higher Order Settlement	Score	Presence of a Bus Service (at least daily), Connecting the Small Settlement to a Higher Order Settlement	Score	Proximity to Train Services	Score	Proximity to a Strategic Highway Network	Score	EV Charging Points within Settlement for Public Use	Score	TOTAL SCORE	Weighted % (35%)
Evenjobb	326305.1	262451.2	No	0	No	0	Yes	5	5 - 10 miles	1	1-3 miles	3	No	0	9	11%
Tanhouse	315924.5	267302.8	No	0	No	0	No	0	Less than 1 mile	4	In Settlement	5	No	0	9	11%
Caerhowel	320452.7	298085	No	0	No	0	Yes	5	5 - 10 miles	1	1-3 miles	3	No	0	9	11%
Felinfach	308962.2	233181.8	No	0	No	0	Yes	5	10 miles or more	0	Less than 1 mile	4	No	0	9	11%
Groesffordd	307529.6	228086.3	No	0	Yes	5	No	0	10 miles or more	0	Less than 1 mile	4	No	0	9	11%
Cwmbelan	294653.6	281610.7	No	0	No	0	Yes	5	10 miles or more	0	Less than 1 mile	4	No	0	9	11%
Fron Bank / Cilcewydd	322894.7	303977.1	No	0	No	0	No	0	1-3 miles	3	In Settlement	5	No	0	8	9%
Pen-y-bont Llanerch Emrys	321170.5	323733.5	No	0	No	0	Yes	5	10 miles or more	0	1-3 miles	3	No	0	8	9%
St Harmon	298743.3	272865.8	No	0	No	0	Yes	5	10 miles or more	0	1-3 miles	3	No	0	8	9%
Cwmbach	316678	239678.3	Yes	5	No	0	No	0	10 miles or more	0	3-5 miles	2	No	0	7	8%
Stepaside	308376.6	289510.2	No	0	No	0	No	0	1-3 miles	3	Less than 1 mile	4	No	0	7	8%
Llangedwyn	318641.8	324339.8	No	0	No	0	Yes	5	10 miles or more	0	3-5 miles	2	No	0	7	8%
Pant y dwr	298317.7	275014.4	No	0	No	0	Yes	5	10 miles or more	0	3-5 miles	2	No	0	7	8%
Beguildy	319463.9	279743.2	No	0	No	0	Yes	5	5 - 10 miles	1	5 - 10 miles	1	No	0	7	8%
Bleddfa	320663.9	268372	No	0	No	0	No	0	3-5 miles	2	In Settlement	5	No	0	7	8%
Felindre	316952.5	281181.1	No	0	No	0	Yes	5	5 - 10 miles	1	5 - 10 miles	1	No	0	7	8%
Coedway	334018	314893.9	No	0	No	0	Yes	5	10 miles or more	0	3-5 miles	2	No	0	7	8%
Llanwnog	302252.2	293867	No	0	No	0	No	0	1-3 miles	3	Less than 1 mile	4	No	0	7	8%
Forge	276362.4	299991	No	0	No	0	No	0	1-3 miles	3	Less than 1 mile	4	No	0	7	8%
Hundred House	311264.9	254460.9	No	0	No	0	No	0	5 - 10 miles	1	In Settlement	5	No	0	6	7%
Nantmel	302755.7	266280.6	No	0	No	0	No	0	3-5 miles	2	Less than 1 mile	4	No	0	6	7%
Llanwrin	278734	303503.9	No	0	No	0	No	0	3-5 miles	2	Less than 1 mile	4	No	0	6	7%

Settlement Name	Easting	Northing	Presence of Cycle Paths or Pavements, Connecting the Small Settlement to a Higher Order Settlement	Score	Proposed Active Travel Routes, Connecting the Small Settlement to a Higher Order Settlement	Score	Presence of a Bus Service (at least daily), Connecting the Small Settlement to a Higher Order Settlement	Score	Proximity to Train Services	Score	Proximity to a Strategic Highway Network	Score	EV Charging Points within Settlement for Public Use	Score	TOTAL SCORE	Weighted % (35%)
Llangunllo	321198.4	271349.8	No	0	No	0	No	0	1-3 miles	3	1-3 miles	3	No	0	6	7%
Abercegir	280377.4	301745.9	No	0	No	0	No	0	3-5 miles	2	1-3 miles	3	No	0	5	6%
Frank's Bridge	311801.4	256130.7	No	0	No	0	No	0	5 - 10 miles	1	Less than 1 mile	4	No	0	5	6%
Aberhafesp	306858	292499.1	No	0	No	0	No	0	3-5 miles	2	1-3 miles	3	No	0	5	6%
Old Radnor	324980.6	259055.6	No	0	No	0	No	0	5 - 10 miles	1	Less than 1 mile	4	No	0	5	6%
Whitton	327169.4	267315.6	No	0	No	0	No	0	3-5 miles	2	1-3 miles	3	No	0	5	6%
Aberedw	307853.9	247403.8	No	0	No	0	No	0	5 - 10 miles	1	Less than 1 mile	4	No	0	5	6%
Llanfilo	311922.3	233311.5	No	0	No	0	No	0	10 miles or more	0	Less than 1 mile	4	No	0	4	5%
Sarnau, Mont.	323523.3	315793.7	No	0	No	0	No	0	5 - 10 miles	1	1-3 miles	3	No	0	4	5%
Bwlch-y-ffridd	306856	295617.8	No	0	No	0	No	0	3-5 miles	2	3-5 miles	2	No	0	4	5%
Nantglas	299499.6	264973.9	No	0	No	0	No	0	5 - 10 miles	1	1-3 miles	3	No	0	4	5%
Y Fan	294916.7	287548.7	No	0	No	0	No	0	5 - 10 miles	1	1-3 miles	3	No	0	4	5%
Darowen	283004.4	301786.8	No	0	No	0	No	0	5 - 10 miles	1	1-3 miles	3	No	0	4	5%
Velindre (Brecknock)	318590.8	236769.4	No	0	No	0	No	0	10 miles or more	0	1-3 miles	3	No	0	3	4%
Adfa	306056.9	301068.5	No	0	No	0	No	0	5 - 10 miles	1	3-5 miles	2	No	0	3	4%
Gladestry	323120.8	255090.6	No	0	No	0	No	0	10 miles or more	0	1-3 miles	3	No	0	3	4%
Llanigon	321181.3	240189.2	No	0	No	0	No	0	10 miles or more	0	1-3 miles	3	No	0	3	4%
Llandyssil	319635	295315.8	No	0	No	0	No	0	5 - 10 miles	1	3-5 miles	2	No	0	3	4%
Ffynnon Gynydd	316385.7	241258.7	No	0	No	0	No	0	10 miles or more	0	1-3 miles	3	No	0	3	4%
Abbeycwmhir	305357.6	271207.6	No	0	No	0	No	0	5 - 10 miles	1	3-5 miles	2	No	0	3	4%
New Mills	309914.2	301163.8	No	0	No	0	No	0	5 - 10 miles	1	3-5 miles	2	No	0	3	4%
Llanddew	305572.6	230755.8	No	0	No	0	No	0	10 miles or more	0	1-3 miles	3	No	0	3	4%

Settlement Name	Easting	Northing	Presence of Cycle Paths or Pavements, Connecting the Small Settlement to a Higher Order Settlement	Score	Proposed Active Travel Routes, Connecting the Small Settlement to a Higher Order Settlement	Score	Presence of a Bus Service (at least daily), Connecting the Small Settlement to a Higher Order Settlement	Score	Proximity to Train Services	Score	Proximity to a Strategic Highway Network	Score	EV Charging Points within Settlement for Public Use	Score	TOTAL SCORE	Weighted % (35%)
Llanfihangel Tal-y-llyn	311316.6	228335.5	No	0	No	0	No	0	10 miles or more	0	1-3 miles	3	No	0	3	4%
Cradoc	301681	230629.6	No	0	No	0	No	0	10 miles or more	0	1-3 miles	3	No	0	3	4%
Bont-dolgadfan	288658.7	300249.3	No	0	No	0	No	0	10 miles or more	0	1-3 miles	3	No	0	3	4%
Llan	288360.5	300672	No	0	No	0	No	0	10 miles or more	0	1-3 miles	3	No	0	3	4%
Newchurch	321609.3	250817.2	No	0	No	0	No	0	10 miles or more	0	3-5 miles	2	No	0	2	2%
Dolanog	306601.2	312852.1	No	0	No	0	No	0	10 miles or more	0	3-5 miles	2	No	0	2	2%
Llanfihangel	308028.7	316785.2	No	0	No	0	No	0	10 miles or more	0	3-5 miles	2	No	0	2	2%
Llawr-y-glyn	293147.8	291229.7	No	0	No	0	No	0	5 - 10 miles	1	5 - 10 miles	1	No	0	2	2%
Cefn Coch	304915.5	302856	No	0	No	0	No	0	10 miles or more	0	3-5 miles	2	No	0	2	2%
Painscastle	316712.7	246274.5	No	0	No	0	No	0	10 miles or more	0	3-5 miles	2	No	0	2	2%
Rhosgoch	318756.8	247767.9	No	0	No	0	No	0	10 miles or more	0	3-5 miles	2	No	0	2	2%
Battle	300922	231001.4	No	0	No	0	No	0	10 miles or more	0	3-5 miles	2	No	0	2	2%
Aberhosan	281138.1	297398.4	No	0	No	0	No	0	5 - 10 miles	1	5 - 10 miles	1	No	0	2	2%
Manafon	311284.6	302454.8	No	0	No	0	No	0	10 miles or more	0	3-5 miles	2	No	0	2	2%
Abertridwr	303385.1	319085.1	No	0	No	0	No	0	10 miles or more	0	5 - 10 miles	1	No	0	1	1%
Llanwddyn	301915.6	319038	No	0	No	0	No	0	10 miles or more	0	5 - 10 miles	1	No	0	1	1%
Lower Chapel	302853.6	235861.5	No	0	No	0	No	0	10 miles or more	0	5 - 10 miles	1	No	0	1	1%

Appendix 2- Principle 2 – Availability of Facilities and Services

Settlement Name	Easting	Northing	Total Services	Score	Distance (miles) to nearest Retail Centre (Adopted LDP)	Score	TOTAL SCORE	Weighted % (30%)
Llangadfan	300974.4	311011.5	8	40	5 - 10 miles	1	41	21%
Beulah	291959.5	251261	7	35	3-5 miles	3	38	19%
Cemmaes	283932.6	306119.7	7	35	5 - 10 miles	1	36	18%
Abertridwr	303385.1	319085.1	7	35	5 - 10 miles	1	36	18%
Gladestry	323120.8	255090.6	7	35	5 - 10 miles	1	36	18%
Llanbister	310884.9	273349.7	7	35	5 - 10 miles	1	36	18%
Llangedwyn	318641.8	324339.8	6	30	3-5 miles	3	33	17%
Sarn	320380.1	290942.8	6	30	5 - 10 miles	1	31	16%
Llandyssil	319635	295315.8	5	25	1-3 miles	4	29	15%
Leighton	324563.5	306016.2	5	25	1-3 miles	4	29	15%
Pant y dwr	298317.7	275014.4	5	25	3-5 miles	3	28	14%
Erwood	309750.2	243001.4	5	25	5 - 10 miles	1	26	13%
Beguildy	319463.9	279743.2	5	25	5 - 10 miles	1	26	13%
Glantwymyn	282205.5	304391.9	5	25	5 - 10 miles	1	26	13%
Coedway	334018	314893.9	5	25	10 miles or more	0	25	13%
Llanbadarn Fynydd	309809.5	278013.6	5	25	10 miles or more	0	25	13%
Derwenlas	272305.1	299119.3	4	20	1-3 miles	4	24	12%
Welshpool Buttington	324978.8	308790.6	4	20	1-3 miles	4	24	12%
Bwlch-y-cibau	317796.7	317395.2	4	20	3-5 miles	3	23	12%
Llanfihangel	308028.7	316785.2	4	20	3-5 miles	3	23	12%
Llangammarch Wells	293635.6	247297.2	4	20	3-5 miles	3	23	12%
Llanwddyn	301915.6	319038	4	20	5 - 10 miles	1	21	11%
Abbeycwmhir	305357.6	271207.6	4	20	5 - 10 miles	1	21	11%

Settlement Name	Easting	Northing	Total Services	Score	Distance (miles) to nearest Retail Centre (Adopted LDP)	Score	TOTAL SCORE	Weighted % (30%)
Adfa	306056.9	301068.5	4	20	5 - 10 miles	1	21	11%
Llangunllo	321198.4	271349.8	4	20	5 - 10 miles	1	21	11%
Penybont	311495.7	263981.1	4	20	5 - 10 miles	1	21	11%
Aberedw	307853.9	247403.8	4	20	5 - 10 miles	1	21	11%
Llanerfyl	303365.5	309671.6	4	20	5 - 10 miles	1	21	11%
Llanfihangel Tal-y-llyn	311316.6	228335.5	4	20	5 - 10 miles	1	21	11%
Cilmery	300383.8	251491.1	3	15	1-3 miles	4	19	10%
Builth Road	302436.8	253252.3	3	15	1-3 miles	4	19	10%
Groes-lwyd	321087.6	311311.1	3	15	1-3 miles	4	19	10%
Groesffordd	307529.6	228086.3	3	15	1-3 miles	4	19	10%
Llanigon	321181.3	240189.2	3	15	1-3 miles	4	19	10%
Y Fan	294916.7	287548.7	3	15	1-3 miles	4	19	10%
Llanddew	305572.6	230755.8	3	15	1-3 miles	4	19	10%
Felinfach	308962.2	233181.8	3	15	3-5 miles	3	18	9%
Velindre (Brecknock)	318590.8	236769.4	3	15	3-5 miles	3	18	9%
Dolfor	310614.6	287202.3	3	15	3-5 miles	3	18	9%
Manafon	311284.6	302454.8	3	15	3-5 miles	3	18	9%
St Harmon	298743.3	272865.8	3	15	3-5 miles	3	18	9%
Elan Village	293481	265298.4	3	15	3-5 miles	3	18	9%
Bleddfa	320663.9	268372	3	15	5 - 10 miles	1	16	8%
Cwm Linau	284722.8	307795.1	3	15	5 - 10 miles	1	16	8%
Evenjobb	326305.1	262451.2	3	15	5 - 10 miles	1	16	8%
Garth	295226.5	249520.5	3	15	5 - 10 miles	1	16	8%
Hundred House	311264.9	254460.9	3	15	5 - 10 miles	1	16	8%
Paincastle	316712.7	246274.5	3	15	5 - 10 miles	1	16	8%

Settlement Name	Easting	Northing	Total Services	Score	Distance (miles) to nearest Retail Centre (Adopted LDP)	Score	TOTAL SCORE	Weighted % (30%)
Tanhouse	315924.5	267302.8	3	15	5 - 10 miles	1	16	8%
Caerhowel	320452.7	298085	2	10	1-3 miles	4	14	7%
Penegoes	277457.3	300940.3	2	10	1-3 miles	4	14	7%
Refail	319227.8	300135.1	2	10	3-5 miles	3	13	7%
Aberhosan	281138.1	297398.4	2	10	3-5 miles	3	13	7%
Esgairgeiliog Ceinws	275928.7	305951.5	2	10	3-5 miles	3	13	7%
Garthmyl	319415.7	299301.9	2	10	3-5 miles	3	13	7%
Pool Quay	325596.2	311447.5	2	10	3-5 miles	3	13	7%
Whitton	327169.4	267315.6	2	10	3-5 miles	3	13	7%
Aberhafesp	306858	292499.1	2	10	3-5 miles	3	13	7%
Llanwrthyl	297416.9	263779.8	2	10	3-5 miles	3	13	7%
Llanfilo	311922.3	233311.5	2	10	3-5 miles	3	13	7%
Lower Chapel	302853.6	235861.5	2	10	3-5 miles	3	13	7%
Felindre	316952.5	281181.1	2	10	5 - 10 miles	1	11	6%
Frank's Bridge	311801.4	256130.7	2	10	5 - 10 miles	1	11	6%
Llandewi Ystradenni	310813.2	268771.8	2	10	5 - 10 miles	1	11	6%
Pen-y-bont Llanerch Emrys	321170.5	323733.5	2	10	5 - 10 miles	1	11	6%
Walton	325679.2	259772.3	2	10	5 - 10 miles	1	11	6%
Kinnerton	324428.2	263059.3	2	10	5 - 10 miles	1	11	6%
Old Radnor	324980.6	259055.6	2	10	5 - 10 miles	1	11	6%
Sarnau , Mont.	323523.3	315793.7	2	10	5 - 10 miles	1	11	6%
Dolanog	306601.2	312852.1	2	10	5 - 10 miles	1	11	6%
Stepaside	308376.6	289510.2	1	5	Less than 1 mile	5	10	5%
Cwmbelan	294653.6	281610.7	1	5	1-3 miles	4	9	5%
Fron Bank	322894.7	303977.1	1	5	1-3 miles	4	9	5%

Settlement Name	Easting	Northing	Total Services	Score	Distance (miles) to nearest Retail Centre (Adopted LDP)	Score	TOTAL SCORE	Weighted % (30%)
Norton	330348	267051.8	1	5	1-3 miles	4	9	5%
Battle	300922	231001.4	1	5	1-3 miles	4	9	5%
Cradoc	301681	230629.6	1	5	1-3 miles	4	9	5%
Cefn Gorwydd	290289.9	245565.6	1	5	1-3 miles	4	9	5%
New Mills	309914.2	301163.8	1	5	3-5 miles	3	8	4%
Cefn Coch	304915.5	302856	1	5	3-5 miles	3	8	4%
Nantmel	302755.7	266280.6	1	5	3-5 miles	3	8	4%
Llowes	319181.4	241734.3	1	5	3-5 miles	3	8	4%
Foel	299134.2	311527.5	1	5	5 - 10 miles	1	6	3%
Llandegley	313923.8	262915.2	1	5	5 - 10 miles	1	6	3%
Clatter	299877.3	294789.8	1	5	5 - 10 miles	1	6	3%
Darowen	283004.4	301786.8	1	5	5 - 10 miles	1	6	3%
Dolau	314217.4	266957.8	1	5	5 - 10 miles	1	6	3%
Llanwnog	302252.2	293867	1	5	5 - 10 miles	1	6	3%
Llawr-y-glyn	293147.8	291229.7	1	5	5 - 10 miles	1	6	3%
Nantglas	299499.6	264973.9	1	5	5 - 10 miles	1	6	3%
Cwmbach	316678	239678.3	1	5	5 - 10 miles	1	6	3%
Ffynnon Gynydd	316385.7	241258.7	1	5	5 - 10 miles	1	6	3%
Newchurch	321609.3	250817.2	1	5	5 - 10 miles	1	6	3%
Llan	288360.5	300672	1	5	10 miles or more	0	5	3%
Aberbechan	314226.2	293519.8	0	0	1-3 miles	4	4	2%
Caehopkin	282376.7	212379.4	0	0	1-3 miles	4	4	2%
Forge	276362.4	299991	0	0	1-3 miles	4	4	2%
Llanwrin	278734	303503.9	0	0	3-5 miles	3	3	2%
Lloyney	324572.8	275743.5	0	0	3-5 miles	3	3	2%

Settlement Name	Easting	Northing	Total Services	Score	Distance (miles) to nearest Retail Centre (Adopted LDP)	Score	TOTAL SCORE	Weighted % (30%)
Abercegir	280377.4	301745.9	0	0	3-5 miles	3	3	2%
Bwlch-y-ffridd	306856	295617.8	0	0	5 - 10 miles	1	1	1%
Commins Coch	284525.2	303147.6	0	0	5 - 10 miles	1	1	1%
Rhosgoch	318756.8	247767.9	0	0	5 - 10 miles	1	1	1%
Bont-dolgadfan	288658.7	300249.3	0	0	10 miles or more	0	0	0%
Talerddig	293045.7	300165.9	0	0	10 miles or more	0	0	0%

Appendix 3- Principle 3 – Employment Opportunities

Settlement Name	Distance to Nearest Safeguarded / Identified Ind Est / Business Park	Score	Name of host settlement of Nearest Safeguarded / Identified Ind Est / Business Park	Employment Opportunities within settlement	Score	TOTAL SCORE	Weighted % (30%)
Welshpool Buttington	In Settlement	10		Warehouse and premises, Factory and premises, Workshop and premises	3	13	30%
Aberbechan	1-3 miles	6	Newtown	Warehouse	3	9	21%
Builth Road	1-3 miles	6	Builth Wells	Workshop, warehouse	3	9	21%
Caehopkin	1-3 miles	6	Ystradgynlais	Haulage Garage and Premises	3	9	21%
Cilmery	1-3 miles	6	Builth Wells	Workshop and premises	3	9	21%
Cwmbach	1-3 miles	6	Three Cocks	Vehicle repair workshop, Workshop and premises	3	9	21%
Cwmbelan	1-3 miles	6	Llanidloes	Workshop and premises	3	9	21%
Derwenlas	1-3 miles	6	Machynlleth	Storage depot and premises	3	9	21%
Fron Bank	1-3 miles	6	Welshpool	Workshop and premises, Store and premises	3	9	21%
Leighton	1-3 miles	6	Welshpool	Warehouse and premises, Workshop and premises	3	9	21%
Llanddew	1-3 miles	6	Brecon	Vehicle repair workshop and premises	3	9	21%
Llandyssil	1-3 miles	6	Abermule	Workshop and premises, Factory and premises	3	9	21%
Llanigon	1-3 miles	6	Hay on Wye	Vehicle repair workshop and premises	3	9	21%
Norton	1-3 miles	6	Presteigne	Workshop and premises, Land used for storage and premises	3	9	21%
Penegoes	1-3 miles	6	Machynlleth	Workshop and premises	3	9	21%
Stepaside	1-3 miles	6	Newtown	Workshop and premises	3	9	21%
Abercegir	3-5 miles	4	Machynlleth	Office, workshop	3	7	16%
Caerhowel	3-5 miles	4	Abermule	Workshop and premises, Warehouse and premises, Vehicle repair shop and premises	3	7	16%
Dolfor	3-5 miles	4	Newtown	Workshop	3	7	16%
Elan Village	3-5 miles	4	Rhayader	Offices and premises	3	7	16%
Esgairgeiliog Ceinws	3-5 miles	4	Machynlleth	Workshop and premises	3	7	16%

Settlement Name	Distance to Nearest Safeguarded / Identified Ind Est / Business Park	Score	Name of host settlement of Nearest Safeguarded / Identified Ind Est / Business Park	Employment Opportunities within settlement	Score	TOTAL SCORE	Weighted % (30%)
Ffynnon Gynydd	3-5 miles	4	Three Cocks	Workshop and premises	3	7	16%
Garthmyl	3-5 miles	4	Abermule	Land used for storage and premises, Warehouse and premises	3	7	16%
Llanfihangel	3-5 miles	4	Llanfyllin	Vehicle repair workshop and premises	3	7	16%
Llanwrin	3-5 miles	4	Machynlleth	Workshop	3	7	16%
Pant y dwr	3-5 miles	4	Rhayader	Vehicle repair workshop and premises	3	7	16%
Rhosgoch	3-5 miles	4	Hay on Wye	Workshop	3	7	16%
Sarnau , Mont.	3-5 miles	4	Four Crosses	Workshop and premises	3	7	16%
St Harmon	3-5 miles	4	Rhayader	Vehicle repair workshop and premises	3	7	16%
Cradoc	1-3 miles	6	Brecon		0	6	14%
Forge	1-3 miles	6	Machynlleth		0	6	14%
Groes-lwyd	1-3 miles	6	Welshpool		0	6	14%
Velindre (Brecknock)	1-3 miles	6	Three Cocks		0	6	14%
Y Fan	1-3 miles	6	Llanidloes		0	6	14%
Aberhafesp	3-5 miles	4	Newtown		0	4	9%
Aberhosan	3-5 miles	4	Machynlleth		0	4	9%
Adfa	5 - 10 miles	1	Newtown	Vehicle repair workshop and premises	3	4	9%
Battle	3-5 miles	4	Brecon		0	4	9%
Bwlch-y-cibau	3-5 miles	4	Llanfyllin		0	4	9%
Coedway	5 - 10 miles	1	Four Crosses	Workshop and premises	3	4	9%
Commins Coch	5 - 10 miles	1	Machynlleth	Offices and premises	3	4	9%
Cwm Linau	5 - 10 miles	1	Machynlleth	Offices and premises	3	4	9%
Evenjobb	5 - 10 miles	1	Presteigne	Workshop and premises	3	4	9%
Felinfach	3-5 miles	4	Talgarth		0	4	9%

Settlement Name	Distance to Nearest Safeguarded / Identified Ind Est / Business Park	Score	Name of host settlement of Nearest Safeguarded / Identified Ind Est / Business Park	Employment Opportunities within settlement	Score	TOTAL SCORE	Weighted % (30%)
Garth	5 - 10 miles	1	Builth Wells	Land used for storage and premises	3	4	9%
Gladestry	5 - 10 miles	1	Presteigne	Workshop and premises	3	4	9%
Glantwymyn	5 - 10 miles	1	Machynlleth	Factory and premises, Workshop and premises, Concrete batching plant and premises	3	4	9%
Groesffordd	3-5 miles	4	Brecon		0	4	9%
Kinnerton	5 - 10 miles	1	Presteigne	Workshop and premises	3	4	9%
Llandewi Ystradenni	5 - 10 miles	1	Llandrindod Wells	Workshop and premises	3	4	9%
Llanfilo	3-5 miles	4	Talgarth		0	4	9%
Llangammarch Wells	5 - 10 miles	1	Builth Wells	Workshop and premises	3	4	9%
Llangedwyn	3-5 miles	4	Llanfyllin		0	4	9%
Llanwddyn	5 - 10 miles	1	Llanfyllin	Workshop and premises, Factory and premises	3	4	9%
Llanwnog	5 - 10 miles	1	Newtown	Workshop and premises	3	4	9%
Llanwrthyl	3-5 miles	4	Rhayader		0	4	9%
Llowes	3-5 miles	4	Hay on Wye		0	4	9%
Lloyney	3-5 miles	4	Knighton		0	4	9%
Nantglas	5 - 10 miles	1	Llandrindod Wells	Workshop and premises	3	4	9%
Nantmel	3-5 miles	4	Rhayader		0	4	9%
Painscastle	5 - 10 miles	1	Hay on Wye	Vehicle repair workshop and premises,	3	4	9%
Penybont	5 - 10 miles	1	Llandrindod Wells	Workshop and premises	3	4	9%
Pen-y-bont Llanerch Emrys	5 - 10 miles	1	Llanfyllin	Workshop and premises	3	4	9%
Pool Quay	3-5 miles	4	Welshpool		0	4	9%
Retail	5 - 10 miles	1	Welshpool	Workshop and premises, Vehicle repair workshop and premises	3	4	9%
Sarn	5 - 10 miles	1	Newtown	Workshop and premises	3	4	9%
Tanhouse	5 - 10 miles	1	Llandrindod Wells	Vehicle repair workshop & premises	3	4	9%

Settlement Name	Distance to Nearest Safeguarded / Identified Ind Est / Business Park	Score	Name of host settlement of Nearest Safeguarded / Identified Ind Est / Business Park	Employment Opportunities within settlement	Score	TOTAL SCORE	Weighted % (30%)
Walton	5 - 10 miles	1	Presteigne	Workshop and premises	3	4	9%
Whitton	3-5 miles	4	Knighton		0	4	9%
Cefn Gorwydd	10 miles or more	0	Builth Wells	Workshop and premises	3	3	7%
Foel	10 miles or more	0	Llanfyllin	Workshop and premises, Offices and storage	3	3	7%
Llanerfyl	10 miles or more	0	Welshpool	Workshop and premises	3	3	7%
Llangadfan	10 miles or more	0	Welshpool	Workshop and premises, Store and premises	3	3	7%
Abbeycwmhir	5 - 10 miles	1	Rhayader		0	1	2%
Aberedw	5 - 10 miles	1	Builth Wells		0	1	2%
Abertridwr	5 - 10 miles	1	Llanfyllin		0	1	2%
Beguildy	5 - 10 miles	1	Knighton		0	1	2%
Beulah	5 - 10 miles	1	Builth Wells		0	1	2%
Bleddfa	5 - 10 miles	1	Knighton		0	1	2%
Bwlch-y-ffridd	5 - 10 miles	1	Newtown		0	1	2%
Cemmaes	5 - 10 miles	1	Machynlleth		0	1	2%
Clatter	5 - 10 miles	1	Llanidloes		0	1	2%
Darowen	5 - 10 miles	1	Machynlleth		0	1	2%
Dolanog	5 - 10 miles	1	Llanfyllin		0	1	2%
Dolau	5 - 10 miles	1	Llandrindod Wells		0	1	2%
Erwood	5 - 10 miles	1	Three Cocks		0	1	2%
Frank's Bridge	5 - 10 miles	1	Llandrindod Wells		0	1	2%
Hundred House	5 - 10 miles	1	Llandrindod Wells		0	1	2%
Llanbister	5 - 10 miles	1	Llandrindod Wells		0	1	2%

Settlement Name	Distance to Nearest Safeguarded / Identified Ind Est / Business Park	Score	Name of host settlement of Nearest Safeguarded / Identified Ind Est / Business Park	Employment Opportunities within settlement	Score	TOTAL SCORE	Weighted % (30%)
Llandegley	5 - 10 miles	1	Llandrindod Wells		0	1	2%
Llanfihangel Tal-y-llyn	5 - 10 miles	1	Brecon		0	1	2%
Llangunllo	5 - 10 miles	1	Knighton		0	1	2%
Llawr-y-glyn	5 - 10 miles	1	Llanidloes		0	1	2%
Lower Chapel	5 - 10 miles	1	Brecon		0	1	2%
New Mills	5 - 10 miles	1	Newtown		0	1	2%
Newchurch	5 - 10 miles	1	Hay on Wye		0	1	2%
Old Radnor	5 - 10 miles	1	Presteigne		0	1	2%
Bont-dolgadfan	10 miles or more	0	Machynlleth		0	0	0%
Cefn Coch	10 miles or more	0	Welshpool		0	0	0%
Felindre	10 miles or more	0	Knighton		0	0	0%
Llan	10 miles or more	0	Machynlleth		0	0	0%
Llanbadarn Fynydd	10 miles or more	0	Newtown		0	0	0%
Manafon	10 miles or more	0	Welshpool		0	0	0%
Talerddig	10 miles or more	0	Newtown		0	0	0%

Appendix 4- Principle 4 – Broadband Provision

Settlement Name	Easting	Northing	Dwellings in Settlement	No of properties 'white listed'	%Coverage	Category	Score
Abbeycwmhir	305357.6	271207.63	15	0	100	100	5
Aberbechan	314226.2	293519.77	17	0	100	100	5
Aberedw	307853.9	247403.76	49	0	100	100	5
Aberhafesp	306858	292499.07	49	0	100	100	5
Aberhosan	281138.1	297398.39	23	0	100	100	5
Adfa	306056.9	301068.54	69	0	100	100	5
Bleddfa	320663.9	268372.03	19	0	100	100	5
Bont-dolgadfan	288658.7	300249.31	30	0	100	100	5
Builth Road	302436.8	253252.29	54	0	100	100	5
Bwlch-y-ffridd	306856	295617.79	35	0	100	100	5
Caerhowel	320452.7	298085.03	63	0	100	100	5
Cemmaes	283932.6	306119.68	68	0	100	100	5
Clatter	299877.3	294789.83	38	0	100	100	5
Cradoc	301681	230629.64	23	0	100	100	5
Cwm Linau	284722.8	307795.05	48	0	100	100	5
Cwmbach	316678	239678.28	15	0	100	100	5
Cwmbelan	294653.6	281610.72	24	0	100	100	5
Darowen	283004.4	301786.75	23	0	100	100	5
Derwenlas	272305.1	299119.3	39	0	100	100	5
Dolfor	310614.6	287202.27	21	0	100	100	5
Esgairgeiliog Ceinws	275928.7	305951.46	64	0	100	100	5
Evenjobb	326305.1	262451.21	60	0	100	100	5
Felinfach	308962.2	233181.82	45	0	100	100	5
Ffynnon Gynydd	316385.7	241258.72	20	0	100	100	5
Foel	299134.2	311527.45	49	0	100	100	5

Settlement Name	Easting	Northing	Dwellings in Settlement	No of properties 'white listed'	%Coverage	Category	Score
Garth	295226.5	249520.45	71	0	100	100	5
Garthmyl	319415.7	299301.86	35	0	100	100	5
Glantwymyn	282205.5	304391.93	48	0	100	100	5
Groesffordd	307529.6	228086.28	44	0	100	100	5
Groes-lwyd	321087.6	311311.09	28	0	100	100	5
Hundred House	311264.9	254460.92	30	0	100	100	5
Kinnerton	324428.2	263059.33	25	0	100	100	5
Leighton	324563.5	306016.2	58	0	100	100	5
Llanbadarn Fynydd	309809.5	278013.59	26	0	100	100	5
Llanbister	310884.9	273349.71	44	0	100	100	5
Llanddew	305572.6	230755.83	77	0	100	100	5
Llandegley	313923.8	262915.22	22	0	100	100	5
Llandewi Ystradenni	310813.2	268771.82	56	0	100	100	5
Llanerfyl	303365.5	309671.57	82	0	100	100	5
Llanfihangel Tal-y-llyn	311316.6	228335.52	120	0	100	100	5
Llanfilo	311922.3	233311.46	32	0	100	100	5
Llangadfan	300974.4	311011.47	91	0	100	100	5
Llangammarch Wells	293635.6	247297.2	108	0	100	100	5
Llangunllo	321198.4	271349.82	46	0	100	100	5
Llanigon	321181.3	240189.19	60	0	100	100	5
Llanwddyn	301915.6	319038.04	32	0	100	100	5
Llanwnog	302252.2	293867.03	48	0	100	100	5
Llanwrin	278734	303503.94	26	0	100	100	5
Llawr-y-glyn	293147.8	291229.73	31	0	100	100	5
Llowes	319181.4	241734.26	34	0	100	100	5
Lower Chapel	302853.6	235861.52	21	0	100	100	5
Manafon	311284.6	302454.79	34	0	100	100	5

Settlement Name	Easting	Northing	Dwellings in Settlement	No of properties 'white listed'	%Coverage	Category	Score
New Mills	309914.2	301163.75	20	0	100	100	5
Newchurch	321609.3	250817.18	17	0	100	100	5
Old Radnor	324980.6	259055.55	23	0	100	100	5
Pant y dwr	298317.7	275014.39	51	0	100	100	5
Penybont	311495.7	263981.1	89	0	100	100	5
Pen-y-bont Llanerch Emrys	321170.5	323733.47	19	0	100	100	5
Pool Quay	325596.2	311447.53	27	0	100	100	5
Refail	319227.8	300135.07	48	0	100	100	5
Rhosgoch	318756.8	247767.86	44	0	100	100	5
Sarn	320380.1	290942.79	88	0	100	100	5
St Harmon	298743.3	272865.78	71	0	100	100	5
Stepaside	308376.6	289510.19	78	0	100	100	5
Tanhouse	315924.5	267302.81	25	0	100	100	5
Velindre (Brecknock)	318590.8	236769.36	24	0	100	100	5
Welshpool Buttlington	324978.8	308790.56	8	0	100	100	5
Whitton	327169.4	267315.6	35	0	100	100	5
Y Fan	294916.7	287548.74	68	0	100	100	5
Abercegir	280377.4	301745.85	41	3	93	81-99	4
Battle	300922	231001.35	41	3	93	81-99	4
Beulah	291959.5	251260.99	74	3	96	81-99	4
Bwlch-y-cibau	317796.7	317395.18	35	1	97	81-99	4
Cefn Gorwydd	290289.9	245565.59	29	1	97	81-99	4
Cilmery	300383.8	251491.11	83	2	98	81-99	4
Commins Coch	284525.2	303147.6	43	1	98	81-99	4
Dolau	314217.4	266957.78	17	1	94	81-99	4
Erwood	309750.2	243001.42	78	2	97	81-99	4
Forge	276362.4	299991.02	39	1	97	81-99	4

Settlement Name	Easting	Northing	Dwellings in Settlement	No of properties 'white listed'	%Coverage	Category	Score
Frank's Bridge	311801.4	256130.67	41	6	85	81-99	4
Fron Bank	322894.7	303977.07	19	2	89	81-99	4
Llandyssil	319635	295315.79	106	1	99	81-99	4
Nantglas	299499.6	264973.87	21	1	95	81-99	4
Penegoes	277457.3	300940.33	119	3	97	81-99	4
Sarnau , Mont.	323523.3	315793.71	23	3	87	81-99	4
Walton	325679.2	259772.29	17	1	94	81-99	4
Abertridwr	303385.1	319085.07	46	16	65	61-80	3
Gladestry	323120.8	255090.63	47	13	72	61-80	3
Llan	288360.5	300671.97	29	10	66	61-80	3
Painscastle	316712.7	246274.48	50	17	66	61-80	3
Llanwrthyl	297416.9	263779.79	35	18	49	41-60	2
Caehopkin	282376.7	212379.4	122	75	39	21-40	1
Beguildy	319463.9	279743.19	31	31	0	0-20	0
Cefn Coch	304915.5	302856	37	37	0	0-20	0
Coedway	334018	314893.92	39	39	0	0-20	0
Dolanog	306601.2	312852.12	25	25	0	0-20	0
Elan Village	293481	265298.42	31	31	0	0-20	0
Felindre	316952.5	281181.08	22	22	0	0-20	0
Llanfihangel	308028.7	316785.21	22	22	0	0-20	0
Llangedwyn	318641.8	324339.77	38	38	0	0-20	0
Lloyney	324572.8	275743.5	29	29	0	0-20	0
Nantmel	302755.7	266280.61	18	18	0	0-20	0
Norton	330348	267051.76	178	178	0	0-20	0
Talerddig	293045.7	300165.85	14	14	0	0-20	0

Appendix 5- Proposed Settlement Tiers Compared to Settlement's Previous Development Plan Positions in Settlement Hierarchy.

Settlement	Proposed Tier	LDP (2011-2026) Settlement Hierarchy	UDP Hierarchy (2001-2016)	Locality	Locality Code
Builth Road	Tier 4	Small Village	Small Village	Builth and Llanwrtyd Locality	PCCLOC09
Caehopkin	Tier 4	Small Village	Large Village	Ystradgynlais Locality	PCCLOC13
Caerhowel	Tier 4	Rural Settlement	Small Village	Welshpool and Montgomery Locality	PCCLOC05
Cilmery	Tier 4	Small Village	Small Village	Builth and Llanwrtyd Locality	PCCLOC09
Derwenlas	Tier 4	Small Village	Small Village	Machynlleth Locality	PCCLOC02
Esgairgeiliog Ceinws	Tier 4	Small Village	Small Village	Machynlleth Locality	PCCLOC02
Leighton Pentre	Tier 4	Small Village	Small Village	Welshpool and Montgomery Locality	PCCLOC05
Llanddew	Tier 4	Small Village	Small Village	Brecon Locality	PCCLOC12
Llandyssil	Tier 4	Small Village	Small Village	Newtown Locality	PCCLOC06
Llangadfan	Tier 4	Small Village	Small Village	Machynlleth Locality	PCCLOC02
Llangammarch Wells	Tier 4	Small Village	Large Village	Builth and Llanwrtyd Locality	PCCLOC09
Norton	Tier 4	Small Village	Small Village	Knighton and Presteigne Locality	PCCLOC08
Penegoes	Tier 4	Small Village	Large Village	Machynlleth Locality	PCCLOC02
Penybont	Tier 4	Small Village	Large Village	Llandrindod and Rhayader Locality	PCCOC07
Sarn	Tier 4	Small Village	Key Settlement	Newtown Locality	PCCLOC06
St Harmon	Tier 4	Small Village	Small Village	Llandrindod and Rhayader Locality	PCCOC07
Stepaside	Tier 4	Rural Settlement	Small Village	Llanidloes Locality	PCCLOC03
Welshpool Buttlington	Tier 4	Rural Settlement	Area Centre	Welshpool and Montgomery Locality	PCCLOC05
Aberbechan	Tier 5	Rural Settlement	Small Village	Newtown Locality	PCCLOC06
Abercegir	Tier 5	Open Countryside	Small Village	Machynlleth Locality	PCCLOC02
Aberedw	Tier 5	Small Village	Small Village	Builth and Llanwrtyd Locality	PCCLOC09
Aberhafesp	Tier 5	Rural Settlement	Small Village	Llanfair Caereinion Locality	PCCLOC04
Abertridwr	Tier 5	Small Village	Large Village	Llanfyllin Locality	PCCLOC01
Adfa	Tier 5	Small Village	Large Village	Llanfair Caereinion Locality	PCCLOC04
Battle	Tier 5	Rural Settlement	Small Village	Brecon Locality	PCCLOC12
Beulah	Tier 5	Small Village	Large Village	Builth and Llanwrtyd Locality	PCCLOC09
Bwlch-y-cibau	Tier 5	Small Village	Small Village	Llanfyllin Locality	PCCLOC01
Cefn Gorwydd	Tier 5	Rural Settlement	Small Village	Builth and Llanwrtyd Locality	PCCLOC09
Cemmaes	Tier 5	Small Village	Small Village	Machynlleth Locality	PCCLOC02
Clatter	Tier 5	Rural Settlement	Small Village	Llanfair Caereinion Locality	PCCLOC04

Settlement	Proposed Tier	LDP (2011-2026) Settlement Hierarchy	UDP Hierarchy (2001-2016)	Locality	Locality Code
Coedway	Tier 5	Rural Settlement	Small Village	Welshpool and Montgomery Locality	PCCLOC05
Commins Coch	Tier 5	Rural Settlement	Small Village	Machynlleth Locality	PCCLOC02
Cradoc	Tier 5	Rural Settlement	Small Village	Brecon Locality	PCCLOC12
Cwm Linau	Tier 5	Small Village	Small Village	Machynlleth Locality	PCCLOC02
Cwmbach	Tier 5	Rural Settlement	Small Village	Hay and Talgarth Locality	PCCLOC10
Cwmbelan	Tier 5	Rural Settlement	Small Village	Llanidloes Locality	PCCLOC03
Dolfor	Tier 5	Rural Settlement	Small Village	Newtown Locality	PCCLOC06
Elan Village	Tier 5	Rural Settlement	Small Village	Llandrindod and Rhayader Locality	PCCOC07
Erwood	Tier 5	Small Village	Large Village	Hay and Talgarth Locality	PCCLOC10
Evenjobb	Tier 5	Rural Settlement	Small Village	Knighton and Presteigne Locality	PCCLOC08
Felinfach	Tier 5	Small Village	Small Village	Brecon Locality	PCCLOC12
Ffynnon Gynydd	Tier 5	Rural Settlement	Small Village	Hay and Talgarth Locality	PCCLOC10
Foel	Tier 5	Small Village	Small Village	Machynlleth Locality	PCCLOC02
Forge	Tier 5	Rural Settlement	Small Village	Machynlleth Locality	PCCLOC02
Frank's Bridge	Tier 5	Rural Settlement	Small Village	Builth and Llanwrtyd Locality	PCCLOC09
Fron Bank	Tier 5	Rural Settlement	Small Village	Welshpool and Montgomery Locality	PCCLOC05
Garth	Tier 5	Small Village	Large Village	Builth and Llanwrtyd Locality	PCCLOC09
Garthmyl	Tier 5	Rural Settlement	Small Village	Welshpool and Montgomery Locality	PCCLOC05
Gladestry	Tier 5	Small Village	Small Village	Knighton and Presteigne Locality	PCCLOC08
Glantwryn	Tier 5	Small Village	Small Village	Machynlleth Locality	PCCLOC02
Groesffordd	Tier 5	Rural Settlement	Small Village	Brecon Locality	PCCLOC12
Groes-lwyd	Tier 5	Small Village	Small Village	Welshpool and Montgomery Locality	PCCLOC05
Kinnerton	Tier 5	Rural Settlement	Small Village	Knighton and Presteigne Locality	PCCLOC08
Llanbadarn Fynydd	Tier 5	Small Village	Small Village	Knighton and Presteigne Locality	PCCLOC08
Llanbister	Tier 5	Small Village	Small Village	Knighton and Presteigne Locality	PCCLOC08
Llandewi Ystradenni	Tier 5	Small Village	Small Village	Knighton and Presteigne Locality	PCCLOC08
Llanerfyl	Tier 5	Small Village	Small Village	Machynlleth Locality	PCCLOC02
Llanfihangel	Tier 5	Rural Settlement	Small Village	Llanfyllin Locality	PCCLOC01

Settlement	Proposed Tier	LDP (2011-2026) Settlement Hierarchy	UDP Hierarchy (2001-2016)	Locality	Locality Code
Llanfihangel Tal-y-llyn	Tier 5	Small Village	Large Village	Crickhowell Locality	PCCLOC11
Llanfilo	Tier 5	Rural Settlement	Small Village	Brecon Locality	PCCLOC12
Llangedwyn	Tier 5	Small Village	Small Village	Llanfyllin Locality	PCCLOC01
Llangunllo	Tier 5	Small Village	Small Village	Knighton and Presteigne Locality	PCCLOC08
Llanigon	Tier 5	Small Village	Large Village	Hay and Talgarth Locality	PCCLOC10
Llanwddyn	Tier 5	Small Village	Small Village	Llanfyllin Locality	PCCLOC01
Llanwnog	Tier 5	Rural Settlement	Small Village	Llanfair Caereinion Locality	PCCLOC04
Llanwrin	Tier 5	Rural Settlement	Small Village	Machynlleth Locality	PCCLOC02
Llanwrthyl	Tier 5	Small Village	Small Village	Builth and Llanwrtyd Locality	PCCLOC09
Llowes	Tier 5	Rural Settlement	Small Village	Hay and Talgarth Locality	PCCLOC10
Manafon	Tier 5	Rural Settlement	Large Village	Llanfair Caereinion Locality	PCCLOC04
Painscastle	Tier 5	Rural Settlement	Small Village	Hay and Talgarth Locality	PCCLOC10
Pant y dwr	Tier 5	Small Village	Small Village	Llandrindod and Rhayader Locality	PCCOC07
Pen-y-bont Llanerch Emrys	Tier 5	Rural Settlement	Small Village	Llanfyllin Locality	PCCLOC01
Pool Quay	Tier 5	Rural Settlement	Small Village	Welshpool and Montgomery Locality	PCCLOC05
Refail	Tier 5	Small Village	Large Village	Welshpool and Montgomery Locality	PCCLOC05
Rhosgoch	Tier 5	Rural Settlement	Small Village	Hay and Talgarth Locality	PCCLOC10
Sarnau , Mont.	Tier 5	Rural Settlement	Small Village	Welshpool and Montgomery Locality	PCCLOC05
Tanhouse	Tier 5	Rural Settlement	Small Village	Knighton and Presteigne Locality	PCCLOC08
Velindre (Brecknock)	Tier 5	Small Village	Small Village	Hay and Talgarth Locality	PCCLOC10
Walton	Tier 5	Rural Settlement	Small Village	Knighton and Presteigne Locality	PCCLOC08
Whitton	Tier 5	Rural Settlement	Small Village	Knighton and Presteigne Locality	PCCLOC08
Y Fan	Tier 5	Small Village	Small Village	Llanidloes Locality	PCCLOC03
Abbeycwmhir	Tier 6	Small Village	Small Village	Llandrindod and Rhayader Locality	PCCOC07
Aberhosan	Tier 6	Rural Settlement	Small Village	Machynlleth Locality	PCCLOC02
Beguildy	Tier 6	Rural Settlement	Small Village	Knighton and Presteigne Locality	PCCLOC08
Bleddfa	Tier 6	Rural Settlement	Small Village	Knighton and Presteigne Locality	PCCLOC08
Bont-dolgadfan	Tier 6	Rural Settlement	Small Village	Machynlleth Locality	PCCLOC02

Settlement	Proposed Tier	LDP (2011-2026) Settlement Hierarchy	UDP Hierarchy (2001-2016)	Locality	Locality Code
Bwlch-y-ffridd	Tier 6	Rural Settlement	Small Village	Llanfair Caereinion Locality	PCCLOC04
Cefn Coch	Tier 6	Rural Settlement	Small Village	Llanfair Caereinion Locality	PCCLOC04
Darowen	Tier 6	Rural Settlement	Small Village	Machynlleth Locality	PCCLOC02
Dolanog	Tier 6	Rural Settlement	Small Village	Llanfyllin Locality	PCCLOC01
Dolau	Tier 6	Rural Settlement	Small Village	Knighton and Presteigne Locality	PCCLOC08
Felindre	Tier 6	Rural Settlement	Small Village	Knighton and Presteigne Locality	PCCLOC08
Hundred House	Tier 6	Rural Settlement	Small Village	Builth and Llanwrtyd Locality	PCCLOC09
Llan	Tier 6	Rural Settlement	Small Village	Machynlleth Locality	PCCLOC02
Llandegley	Tier 6	Rural Settlement	Small Village	Llandrindod and Rhayader Locality	PCCOC07
Llawr-y-glyn	Tier 6	Rural Settlement	Small Village	Llanidloes Locality	PCCLOC03
Lloyney	Tier 6	Rural Settlement	Small Village	Knighton and Presteigne Locality	PCCLOC08
Lower Chapel	Tier 6	Rural Settlement	Small Village	Brecon Locality	PCCLOC12
Nantglas	Tier 6	Rural Settlement	Small Village	Llandrindod and Rhayader Locality	PCCOC07
Nantmel	Tier 6	Small Village	Small Village	Llandrindod and Rhayader Locality	PCCOC07
New Mills	Tier 6	Rural Settlement	Small Village	Llanfair Caereinion Locality	PCCLOC04
Newchurch	Tier 6	Rural Settlement	Small Village	Knighton and Presteigne Locality	PCCLOC08
Old Radnor	Tier 6	Rural Settlement	Small Village	Knighton and Presteigne Locality	PCCLOC08
Talerddig	Tier 6	Rural Settlement	Small Village	Machynlleth Locality	PCCLOC02